

©Copyright 1995, Xandex Inc., All Rights Reserved. The information disclosed herein is deemed to be confidential, proprietary, and a trade secret of Xandex, Inc. This information may not be used, reproduced or disclosed without the express prior written consent of Xandex, Inc.

REVISIONS

REV	DESCRIPTION	ECO	BY	DATE	APPROVED
B	REDRAWN ON CADD	680	HG	10/20/95	DT
C	SHOW NEW BASE	900	JMc	07/22/96	DT
D	REV TO MAG BASE	1801	RAP	04/30/99	

NOTES:

1. INKER FOR KLA OR TEL PROBER, OFF LINE OR CABLED PROBING.
2. THIS INKER USES THE DM-2 CARTRIDGE ONLY.
3. INKER ARM IS ADJUSTABLE ALONG THE "Z" AXIS BY ±.188.
4. JOYSTICK PROVIDES "X" AND "Y" AXIS MOVEMENT AT THE TIP OF THE CARTRIDGE NEEDLE.
5. ALL DIMENSIONS SHOWN WITH ADJUSTMENTS IN NEUTRAL POSITION.
6. INKER MOUNTS TO THE PROBER USING TWO M3 X .5 X 6MM PAN HEAD SLOTTED SCREWS (SUPPLIED).

FILE NAME	9000079D	ITEM	QTY	PART NUMBER	DESCRIPTION
APPROVALS	DATE	INTERPRET DRAWING PER ANSI Y14.5 - 1982			
DRAWN	JMc	7/22/96			
CHECKED		TOLERANCES UNLESS OTHERWISE SPECIFIED			
D.C.		DIMENSIONS ARE IN INCHES DECIMALS			
ENGRG	D. TEGLIA	08/05/96			
DWG ENGRG		NEXT ASSEMBLIES.....USED ON			
		1 PL ±	FRACTIONS ±		
		2 PL ±	ANGLES ±		
		3 PL ±			
		4 PL ±	ALL SURFACES		

XANDEX INC. 1125 N. McDOWELL BLVD. PETALUMA, CA 95954 (707) 763 7799

TITLE PNEUMATIC INKER, X1200 (KIT #340-1200)

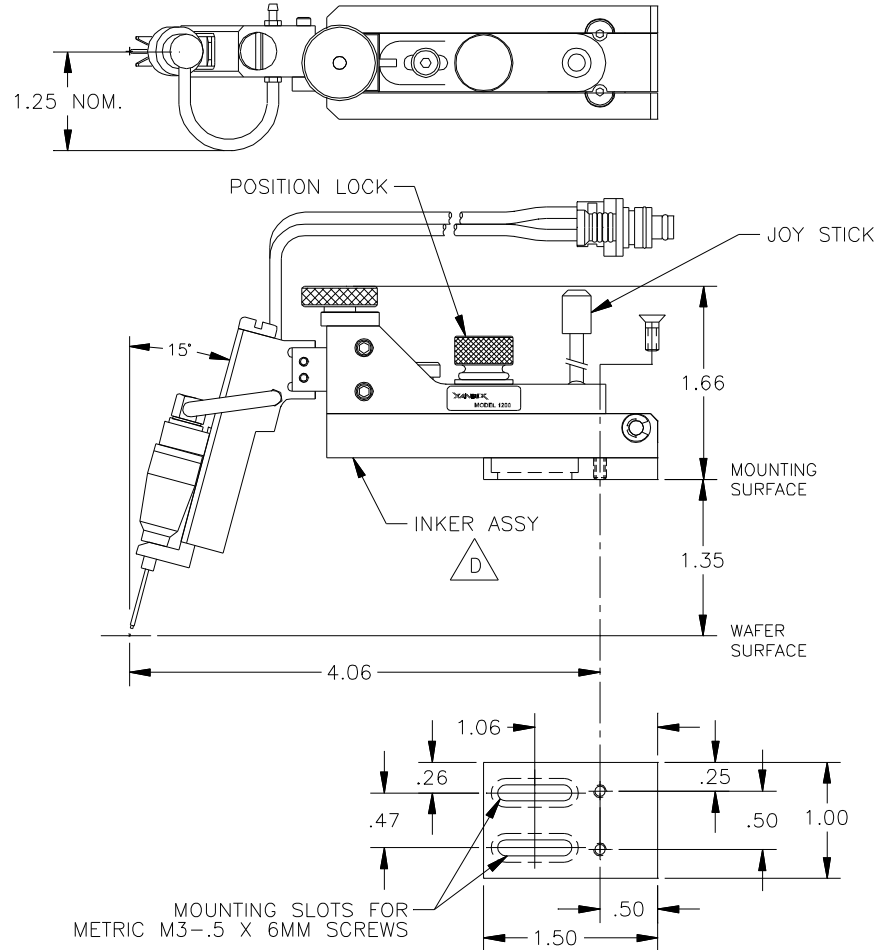
DO NOT SCALE DRAWING

SIZE	SCALE	SHEET	DRAWING NUMBER	REV
A	1/1	1 of 2	900-0079	D

©Copyright 1995, Xandex Inc., All Rights Reserved. The information disclosed herein is deemed to be confidential, proprietary, and a trade secret of Xandex, Inc. This information may not be used, reproduced or disclosed without the express prior written consent of Xandex, Inc.

REVISIONS

REV	DESCRIPTION	ECO	BY	DATE	APPROVED
-	SEE SHEET 1	-	-	-	-



XANDEX INC. 1125 N. McDOWELL BLVD. PETALUMA, CA 95954 (707) 763 7799

TITLE PNEUMATIC INKER, X1200 (KIT #340-1200)

FILE NAME	9000079D	DO NOT SCALE DRAWING			
SIZE	SCALE	SHEET	DRAWING NUMBER	REV	
A	1/1	2 of 2	900-0079	D	