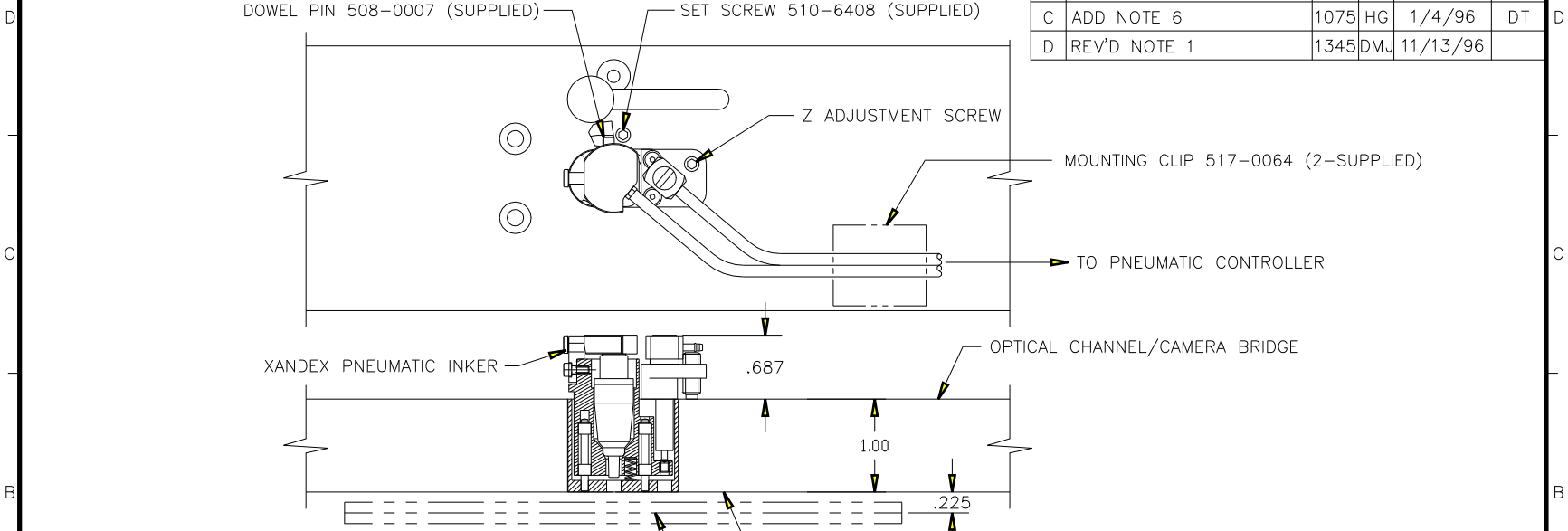



©Copyright Xandex Inc., All Rights Reserved.
 The information disclosed herein is deemed to be confidential, proprietary, and a trade secret of Xandex, Inc. This information may not be used, reproduced or disclosed without the express prior written consent of Xandex, Inc.

REVISIONS					
REV	DESCRIPTION	ECO	BY	DATE	APPROVED
A	INITIAL RELEASE	905	DT	09/08/95	
B	INCORPORATE REDESIGN	1062	DT	12/7/95	DT
C	ADD NOTE 6	1075	HG	1/4/96	DT
D	REV'D NOTE 1	1345	DMJ	11/13/96	



NOTES:

1. INKER USES DM-2.3 INK CARTRIDGES.
2. SHUTTLE TRAVELS .050 FROM POSITION SHOWN TO DEPOSIT INK ON WAFER. INKER IS SHOWN IN NOMINAL INKING POSITION WITH Z ADJUSTMENT CAPABILITY OF +/- .190 INCHES.
3. INKER INSTALLS INTO STANDARD INKER MOUNT ON EG OPTICAL CHANNEL (PART NO 252884).
4. INKER HAS NO X, Y ADJUSTMENT CAPABILITY.
5. FOR STANDARD INKER KIT, ORDER PART NUMBER 340-5100.
6. FOR X/Y INKER-DIE ALIGNMENT TOOL, ORDER PART NUMBER 120-0081.

FILE NAME 9000165D	ITEM	QTY	PART NUMBER	DESCRIPTION	
APPROVALS	DATE	INTERPRET DRAWING		 1125 N. McDOWELL BLVD. PETALUMA, CA 95954 (707) 763 7799	
DRAWN DT	8/24/95	PER ANSI Y14.5 - 1982			
CHECKED		TOLERANCES			
DATE DT	12/8/95	UNLESS OTHERWISE SPECIFIED			
NEXT ASSEMBLIES.....USED ON 340-5100				DIMENSIONS ARE IN INCHES	
				DECIMALS	
				1 PL ± FRACTIONS ±	
				2 PL ± ANGLES ±	
				3 PL ±	
				4 PL ± ALL SURFACES	
DO NOT SCALE DRAWING					
SIZE B	SCALE 1/1	SHEET 1	OF 1	DRAWING NUMBER 900-0165	REV D