


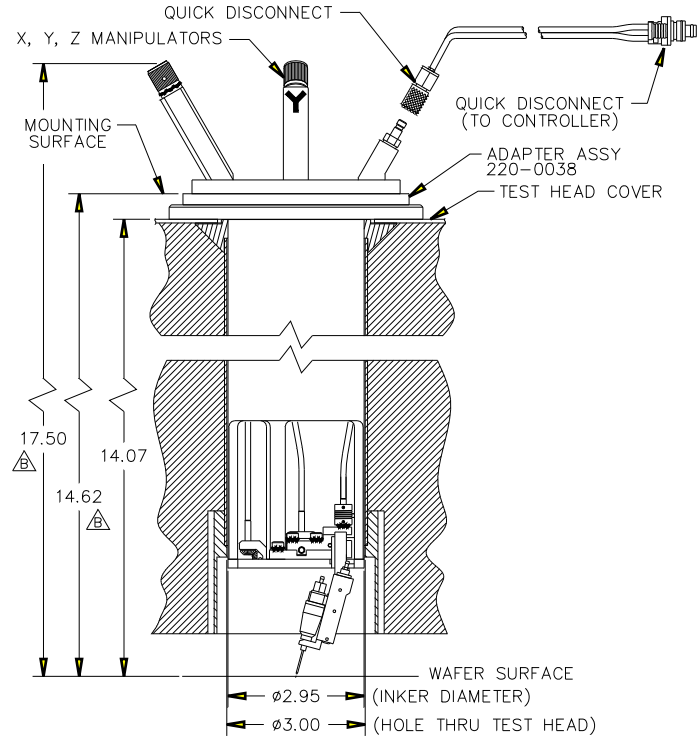
REVISIONS						
REV	DESCRIPTION	ECO	BY	DATE	APPROVED	
A	INITIAL RELEASE	1108	HG	1/26/96		
B	CHNG NOTE 2, PICTURE	1236	JMc	06/14/96		


NOTES:

1. INKER IS DESIGNED FOR USE ON CREDECE SC212 TESTERS. TEST HEAD MUST BE RETRO-FITTED WITH THE XANDEX ADAPTER ASSY, PART NUMBER 220-0038. NO OTHER MODIFICATION TO THE TESTER IS NECESSARY.
2. X, Y ADJUSTMENT IS ± 0.062 . Z ADJUSTMENT CAPABILITY IS ± 0.125 PLUS AN ADDITIONAL ± 0.20 ADJUSTMENT TO ACCOMODATE PROBE TIPS LONGER THAN 0.080 , OR A CUSTOM INTERFACE. $\triangle B$
3. INKER IS DESIGNED FOR USE WITH THE OPTEM HF-65 MICROSCOPE WITH A $0.525X-3.37X$ OBJECTIVE LENS. MINIMUM WORKING DISTANCE IS 114mm (4.50").
4. ORDER INKER KIT X3306 (PART NUMBER 340-3306).

FILE NAME 9000170B		ITEM QTY PART NUMBER	DESCRIPTION
APPROVALS HOLLY G.	DATE 1/26/96	INTERPRET DRAWING PER ANSI Y14.5 - 1982	 1125 N. McDOWELL BLVD. PETALUMA, CA 95954 (707) 763 7799
TOLERANCES UNLESS OTHERWISE SPECIFIED		DIMENSIONS ARE IN INCHES DECIMALS	
NEXT ASSEMBLIES.....USED ON 340-3306		1 PL \pm FRACTIONS \pm	TITLE INKER SERIES X3306 CREDECE SC212, R/A
		2 PL \pm ANGLES \pm	DO NOT SCALE DRAWING
		3 PL \pm	SIZE SCALE SHEET DRAWING NUMBER REV
		4 PL \pm <input checked="" type="checkbox"/> ALL SURFACES	A 1/2 1 of 2 900-0170 B

REVISIONS						
REV	DESCRIPTION	ECO	BY	DATE	APPROVED	
	SEE SHEET 1					



 1125 N. McDOWELL BLVD. PETALUMA, CA 95954 (707) 763 7799		TITLE INKER SERIES X3306 CREDECE SC212, R/A	
FILE NAME 9000170B		DO NOT SCALE DRAWING	
SIZE A	SCALE 1/1	SHEET 2 of 2	DRAWING NUMBER 900-0170
			REV B