

© Copyright 1995, Xandex Inc., All Rights Reserved. The information disclosed herein is deemed to be confidential, proprietary, and a trade secret of Xandex, Inc. This information may not be used, reproduced or disclosed without the express prior written consent of Xandex, Inc.

REVISIONS

REV	DESCRIPTION	ECO	BY	DATE	APPROVED
A	INITIAL RELEASE	0337	JMG	08/12/97	JG
B	REV TO MAG BASE	1801	RAP	04/30/99	

NOTES:

1. THIS INKER IS FOR A KLA PROBER WITH MOUNTING HOLES FOR 5IN 6IN WAFERS.
2. THIS INKER USES THE DM-2 CARTRIDGE ONLY.
3. INKER ARM IS ADJUSTABLE ALONG THE "Z" AXIS BY ±.188.
4. JOYSTICK PROVIDES "X" AND "Y" AXIS MOVEMENT AT THE TIP OF THE CARTRIDGE NEEDLE.
5. ALL DIMENSIONS SHOWN WITH ADJUSTMENTS IN NEUTRAL POSITION.
6. INKER MOUNTS TO THE PROBER USING TWO M3 X .5 X 6MM PAN HEAD SLOTTED SCREWS (SUPPLIED).

FILE NAME	9000196B	ITEM	QTY	PART NUMBER	DESCRIPTION
APPROVALS	DATE	INTERPRET DRAWING PER ANSI Y14.5 - 1982			
DRAWN	JAMES G. 8/12/97	TOLERANCES UNLESS OTHERWISE SPECIFIED			
CHECKED		DIMENSIONS ARE IN INCHES			
ENGRG	JAMES G. 08/26/97	DECIMALS			
APP ENGRG		1 PL ± FRACTIONS ±			
NEXT ASSEMBLIES.....USED ON		2 PL ± ANGLES ±			
		3 PL ± ALL SURFACES			
		4 PL ±			

XANDEX INC. 1125 N. McDOWELL BLVD. PETALUMA, CA 95954 (707) 763 7799

TITLE PNEUMATIC INKER, X1204 (KIT #340-1204)

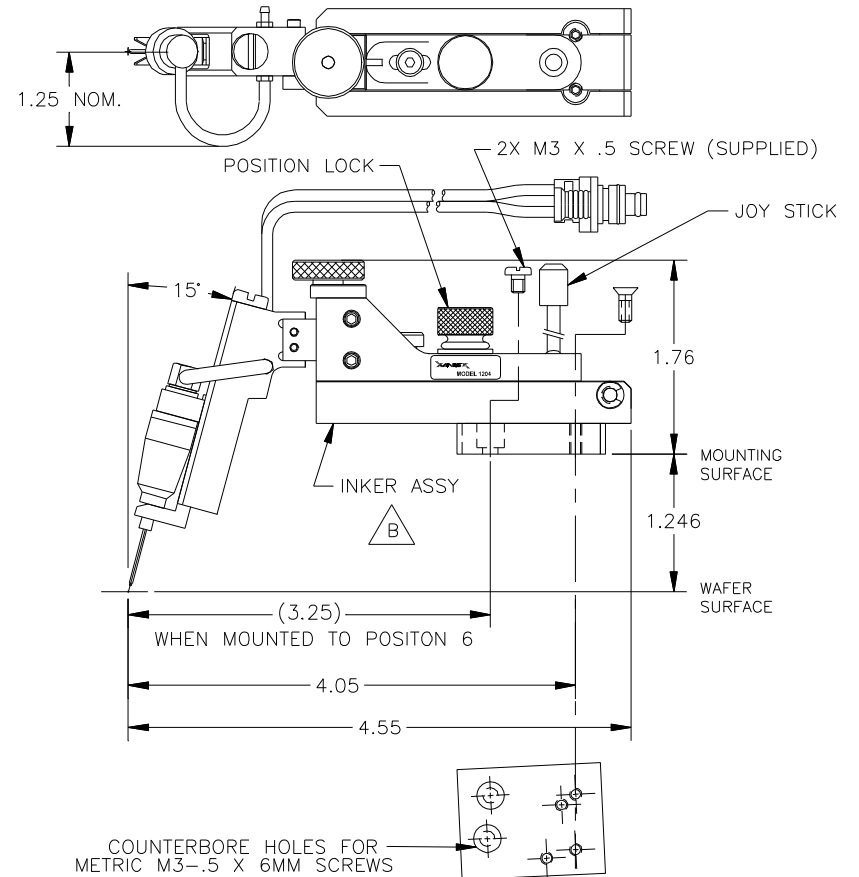
DO NOT SCALE DRAWING

SIZE	SCALE	SHEET	DRAWING NUMBER	REV
A	1/1	1 of 2	900-0196	B

© Copyright 1995, Xandex Inc., All Rights Reserved. The information disclosed herein is deemed to be confidential, proprietary, and a trade secret of Xandex, Inc. This information may not be used, reproduced or disclosed without the express prior written consent of Xandex, Inc.

REVISIONS

REV	DESCRIPTION	ECO	BY	DATE	APPROVED
-	SEE SHEET 1	-	-	-	-



XANDEX INC. 1125 N. McDOWELL BLVD. PETALUMA, CA 95954 (707) 763 7799

TITLE PNEUMATIC INKER, X1204 (KIT #340-1204)

FILE NAME	9000196B	DO NOT SCALE DRAWING			
SIZE	SCALE	SHEET	DRAWING NUMBER	REV	
A	1/1	2 of 2	900-0196	B	