

©Copyright Xandex Inc., All Rights Reserved.  
 The information disclosed herein is deemed to be confidential, proprietary, and a trade secret of Xandex, Inc. This information may not be used, reproduced or disclosed without the express prior written consent of Xandex, Inc.

**REVISIONS**

REV	DESCRIPTION	CHANGE NUMBER	BY	DATE	APPROVED
A	INITIAL RELEASE	0317	JMG	09/02/97	D.T.
B	DIM 9.26 WAS 10.21	1569	DY	10/27/97	

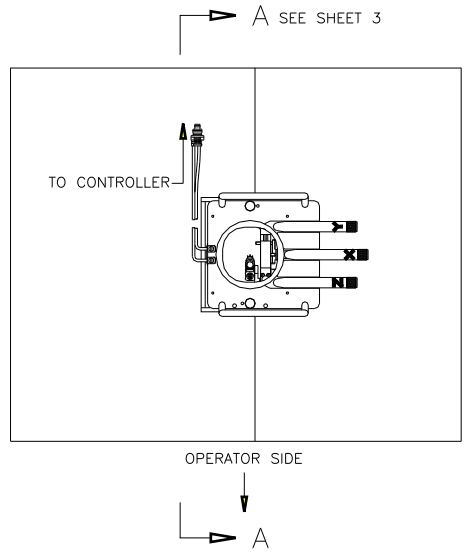
**NOTES:**


1. THIS INKER USES DM-2 CARTRIDGES.
2. THE INKER IS DESIGNED FOR USE ON ADVANTEST 3300 SERIES TESTERS WITH AN EG 2001X, TEL 19S OR TEL P8 PROBER.
3. THE INKER INSTALLS ONTO THE TESTER WITH TWO ADAPTER ASSEMBLIES (XANDEX PART NUMBER 220-0057, SUPPLIED WITH KIT). NO OTHER MODIFICATION OF THE TEST HEAD IS REQUIRED.
4. INKER IS EASILY INSTALLED OR REMOVED FROM THE TESTER WITH TWO THUMBSCREWS. X,Y & Z ADJUSTMENTS CAN BE MADE WITH THE SYSTEM DOCKED, AND MICROSCOPE IN PLACE.
5. AS BUILT, THE INKER IS DESIGNED TO WORK WITH AN INTERFACE DEPTH OF .755 INCHES (TOP OF LOAD BOARD TO PROBE TIPS). TO ACCOMMODATE OTHER INTERFACE HEIGHTS, AN ADJUSTMENT OF ±.18 INCHES IS EASILY ACCOMPLISHED BY THE REMOVAL OF TWO SCREWS ON THE CARTRIDGE HOLDER ARM.
6. THE INKER IS DESIGNED TO ACCOMMODATE AN OLYMPUS MODEL SZ4045 MICROSCOPE, WITH A FOCAL LENGTH OF 250MM AT .36X MAGNIFICATION AND 350 MM AT .3X MAGNIFICATION.
7. X ADJUSTMENT IS ±.205, Y ADJUSTMENT IS +.25 -.205, Z ADJUSTMENT IS ±.162.
8. FOR EG PROBERS ORDER INKER KIT X3318 (PART NUMBER 340-3318). FOR TEL PROBERS ORDER INKER KIT X3319 (PART NUMBER 340-3319).

©Copyright Xandex Inc., All Rights Reserved.  
 The information disclosed herein is deemed to be confidential, proprietary, and a trade secret of Xandex, Inc. This information may not be used, reproduced or disclosed without the express prior written consent of Xandex, Inc.

**REVISIONS**

REV	DESCRIPTION	CHANGE NUMBER	BY	DATE	APPROVED
-	SEE SHEET 1				



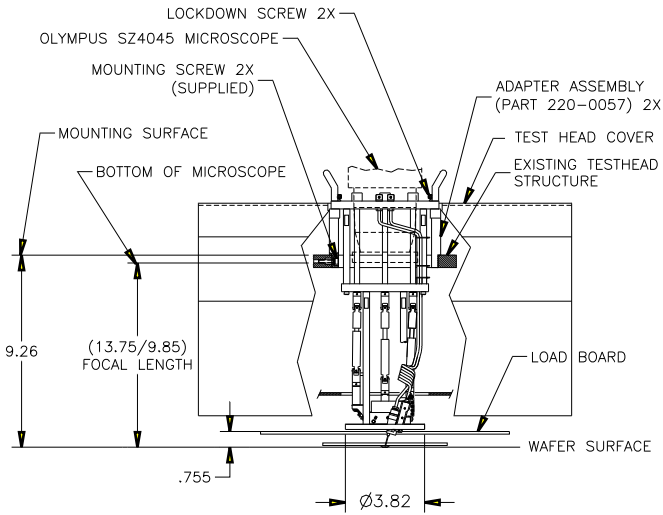
FILE NAME 9000197B		ITEM	QTY	PART NUMBER	DESCRIPTION	
APPROVALS	DATE	INTERPRET DRAWING		 1125 N. McDOWELL BLVD. PETALUMA, CA 94954 (707) 763 7799		
DRAWN JAMES G.	9/2/97	PER ANSI Y14.5 - 1982				
DESIGNED		TOLERANCES		TITLE <b>INKER ASSEMBLY, R/A</b> <b>ADVANTEST 3300</b>		
D.T.	9/5/97	UNLESS OTHERWISE SPECIFIED				
DIMENSIONS ARE IN INCHES		DECIMALS		DO NOT SCALE DRAWING		
NEXT ASSEMBLIES.....USED ON		1 PL ±	FRACTIONS ±			
		2 PL ±	ANGLES ±	SIZE	SCALE	SHEET
		3 PL ±		A	1/1	1 of 3
		4 PL ±	ALL SURFACES	DRAWING NUMBER	REV	
				900-0197	B	

		TITLE <b>INKER ASSEMBLY, R/A</b> <b>ADVANTEST 3300</b>	
1125 N. McDOWELL BLVD. PETALUMA, CA 94954 (707) 763 7799		FILE NAME 9000197B	DO NOT SCALE DRAWING
SIZE	SCALE	SHEET	DRAWING NUMBER
A	1/1	2 of 3	900-0197
			REV
			B

©Copyright Xandex Inc., All Rights Reserved.  
 The information disclosed herein is deemed to be confidential, proprietary, and a trade secret of Xandex, Inc. This information may not be used, reproduced or disclosed without the express prior written consent of Xandex, Inc.

# REVISIONS

REV	DESCRIPTION	CHANGE NUMBER	BY	DATE	APPROVED
-	SEE SHEET 1				



## SECTION A-A



1125 N. McDOWELL BLVD.  
 PETALUMA, CA 94954  
 (707) 763 7799

TITLE INKER ASSEMBLY, R/A  
 ADVANTEST 3300

FILE NAME 9000197B		DO NOT SCALE DRAWING	
SIZE A	SCALE 1/1	SHEET 3 of 3	DRAWING NUMBER 900-0197
			REV B