


© Copyright Xandex Inc., All Rights Reserved.
 The information disclosed herein is deemed to be confidential, proprietary, and a trade secret of Xandex, Inc. This information may not be used, reproduced or disclosed without the express prior written consent of Xandex, Inc.

REVISIONS

| REV | DESCRIPTION | CHANGE NUMBER | BY | DATE | APPROVED |
|-----|------------------------|---------------|-----|----------|----------|
| A | INITIAL RELEASE | 1937 | RAP | 09/13/99 | JG |
| B | ADD 1" TO INKER HEIGHT | 1988 | RAP | 11/09/99 | |

NOTES:

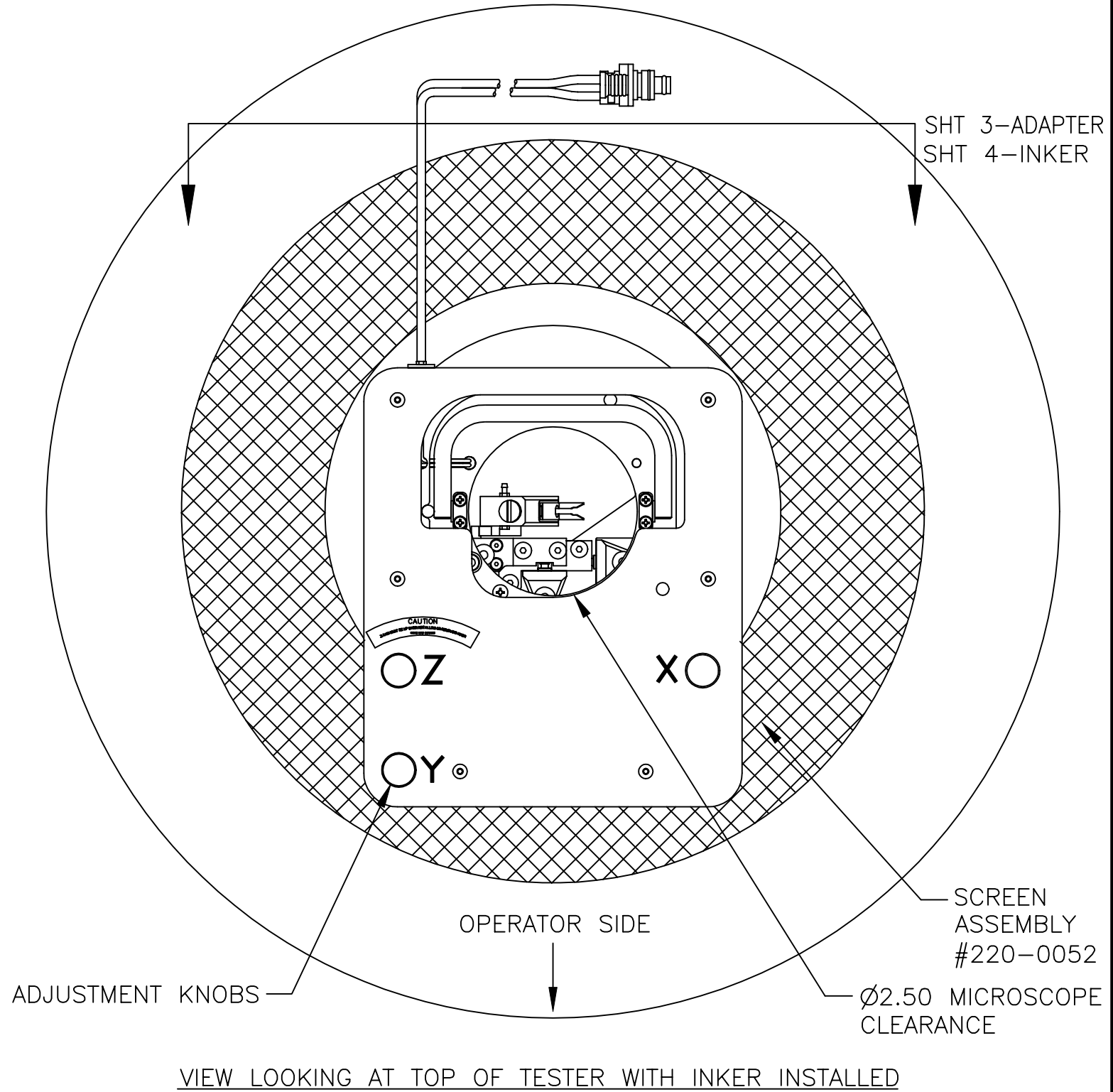
1. INKER USES STANDARD DM-2 CARTRIDGES.
2. INKER IS DESIGNED FOR USE ON CREDENCE VISTAVISION OR VISTALOGIC 512 PIN TESTERS ON AN EG 2000 SERIES PROBER. TEST HEAD MUST BE RETRO-FITTED WITH THE XANDEX ADAPTER ASSEMBLY, PART NUMBER 220-0053. IF YOUR TESTER IS EQUIPPED WITH A SCREENED TOP COVER, YOU WILL REQUIRE XANDEX SCREEN ASSEMBLY, PART NUMBER 220-0052. BOTH ASSEMBLIES ARE INCLUDED WITH KIT 340-3317.
3. AS BUILT, THE INKER IS DESIGNED TO WORK WITH A STANDARD TEST DESIGN INTERFACE. AN ADDITIONAL ADJUSTMENT OF .10 HIGHER, OR .50 LOWER TO ACCOMMODATE CUSTOM INTERFACES IS EASILY ACCOMPLISHED BY THE REMOVAL OF TWO SCREWS ON THE CARTRIDGE HOLDER ARM.
4. INKER IS DESIGNED FOR USE WITH THE OPTEM HF-65 "STRETCH" MICROSCOPE, WITH A 6" FOCAL LENGTH (WORKING DISTANCE).
5. THE ADAPTER ASSEMBLY IS DESIGNED TO ALLOW EASY INSTALLATION OR REMOVAL OF THE INKER, BY UTILIZING TWO STAINLESS STEEL SHAFTS TO GUIDE THE INKER IN AND OUT OF THE TESTHEAD. THE ADAPTER IS ALSO DESIGNED TO ALLOW "LEVELING" OF THE INKER TO ACCOMODATE ANY LACK OF PLANARITY IN THE TESTHEAD STRUCTURE.
6. BECAUSE OF THE EXTREME DEPTH OF THE TESTHEAD, AND CONSEQUENT EXTRA LONG INKER, A HANDLE HAS BEEN PROVIDED ON THE INKER FOR EASIER INSTALLATION AND REMOVAL.
7. A NEW DESIGN UTILIZING SOLID SHAFTING, PROVIDES INCREASED RELIABILITY, IMPROVED X/Y/Z ACTUATION, AND EASY ACCESS ADJUSTMENT KNOBS.
8. X, Y ADJUSTMENT IS ± 0.062 . Z ADJUSTMENT CAPABILITY IS ± 0.125 .
9. ORDER INKER KIT X3317 (PART NUMBER 340-3317).

| APPROVALS | DATE | ITEM | QTY | PART NUMBER | DESCRIPTION | | | | | | | | | | |
|-----------------------------|----------|--|----------------|----------------------|---|--|-------|-------|----------------|-----|---|-----|--------|----------|---|
| DRAWN R. PERRY | 09/10/99 | INTERPRET DRAWING PER ASME Y14.5M-1994 | | |  | 1125 N. McDOWELL BLVD. PETALUMA, CA 94954 (707) 763 7799 | | | | | | | | | |
| CHECKED | | TOLERANCES UNLESS OTHERWISE SPECIFIED | | | | | | | | | | | | | |
| Q.C. | | DIMENSIONS ARE IN INCHES | | | TITLE INKER KIT, X3317, REMOTE ADJUST, PNEUMATIC | | | | | | | | | | |
| ENGRG JAMES G. | 09/24/99 | DECIMALS | | | | | | | | | | | | | |
| MFG ENGRG | | 1 PL \pm | | FRACTIONS \pm | DO NOT SCALE DRAWING | | | | | | | | | | |
| NEXT ASSEMBLIES.....USED ON | | 2 PL ± 0.010 | | ANGLES $\pm 1^\circ$ | | | | | | | | | | | |
| | | 3 PL ± 0.005 | | 6.3 / ALL SURFACES | | | | | | | | | | | |
| | | 4 PL \pm | | | | | | | | | | | | | |
| | | | | | <table border="1" style="width: 100%; border-collapse: collapse;"> <tr> <th style="width: 10%;">SIZE</th> <th style="width: 15%;">SCALE</th> <th style="width: 15%;">SHEET</th> <th style="width: 30%;">DRAWING NUMBER</th> <th style="width: 10%;">REV</th> </tr> <tr> <td style="text-align: center;">A</td> <td style="text-align: center;">1/2</td> <td style="text-align: center;">1 OF 4</td> <td style="text-align: center;">900-3317</td> <td style="text-align: center;">B</td> </tr> </table> | SIZE | SCALE | SHEET | DRAWING NUMBER | REV | A | 1/2 | 1 OF 4 | 900-3317 | B |
| SIZE | SCALE | SHEET | DRAWING NUMBER | REV | | | | | | | | | | | |
| A | 1/2 | 1 OF 4 | 900-3317 | B | | | | | | | | | | | |

© Copyright Xandex Inc., All Rights Reserved.
 The information disclosed herein is deemed to be confidential, proprietary, and a trade secret of Xandex, Inc. This information may not be used, reproduced or disclosed without the express prior written consent of Xandex, Inc.

REVISIONS

| REV | DESCRIPTION | CHANGE NUMBER | BY | DATE | APPROVED |
|-----|-------------|---------------|----|------|----------|
| - | SEE SHEET 1 | - | - | - | - |



VIEW LOOKING AT TOP OF TESTER WITH INKER INSTALLED



1125 N. McDOWELL BLVD.
 PETALUMA, CA 94954
 (707) 763 7799

TITLE INKER KIT, X3317,
 REMOTE ADJUST, PNEUMATIC

SEE SHEET 1 FOR NOTES
 AND TOLERANCE INFORMATION

DO NOT SCALE DRAWING

| | | |
|------|-------|--------|
| SIZE | SCALE | SHEET |
| A | 1/2 | 2 OF 4 |

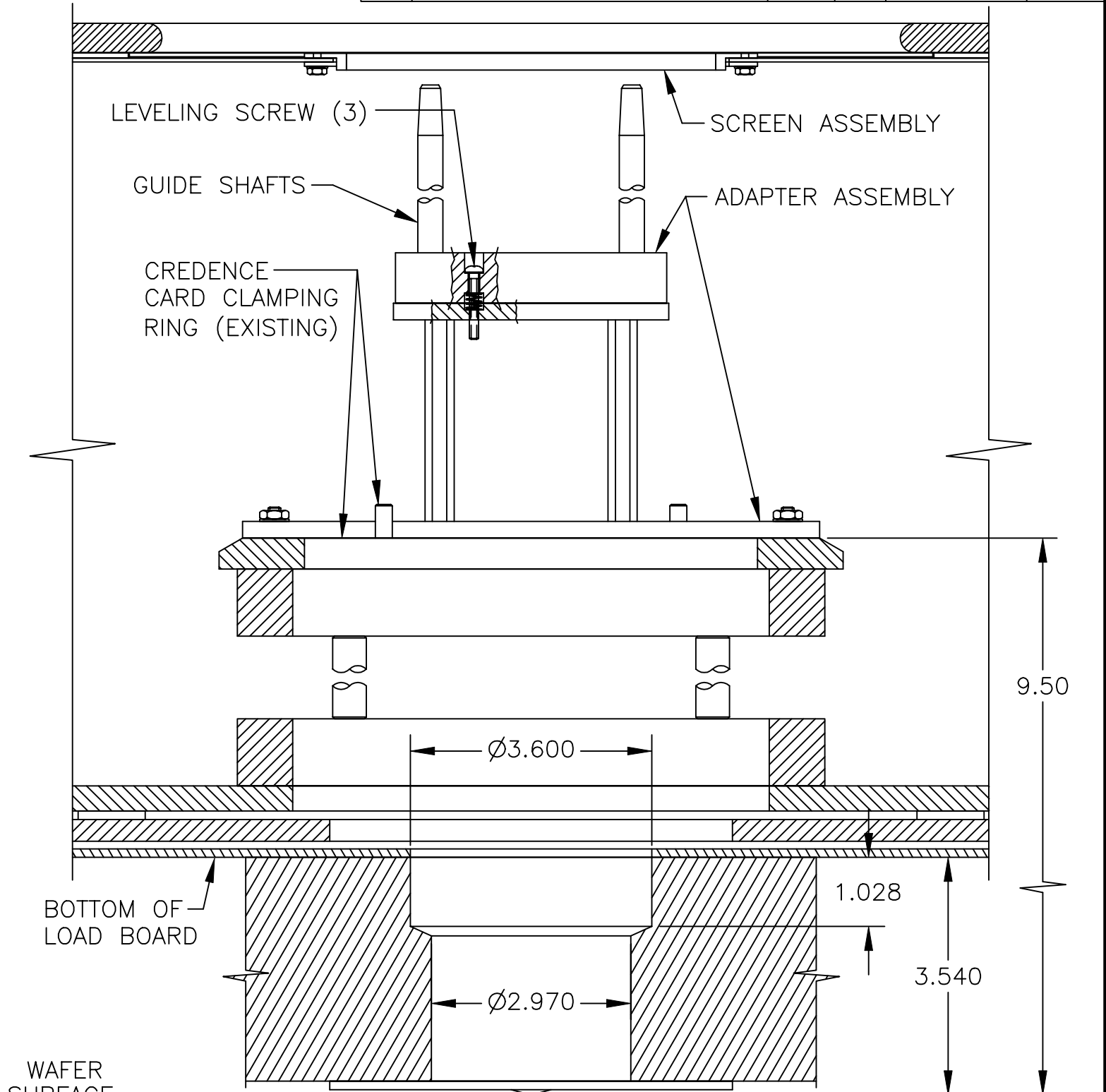
| |
|----------------|
| DRAWING NUMBER |
| 900-3317 |

| |
|-----|
| REV |
| B |

© Copyright Xandex Inc., All Rights Reserved.
 The information disclosed herein is deemed to be confidential, proprietary, and a trade secret of Xandex, Inc. This information may not be used, reproduced or disclosed without the express prior written consent of Xandex, Inc.

REVISIONS

| REV | DESCRIPTION | CHANGE NUMBER | BY | DATE | APPROVED |
|-----|-------------|---------------|----|------|----------|
| - | SEE SHEET 1 | - | - | - | - |



VIEW LOOKING AT SECTION OF TESTER WITH ADAPTER INSTALLED



1125 N. McDOWELL BLVD.
 PETALUMA, CA 94954
 (707) 763 7799

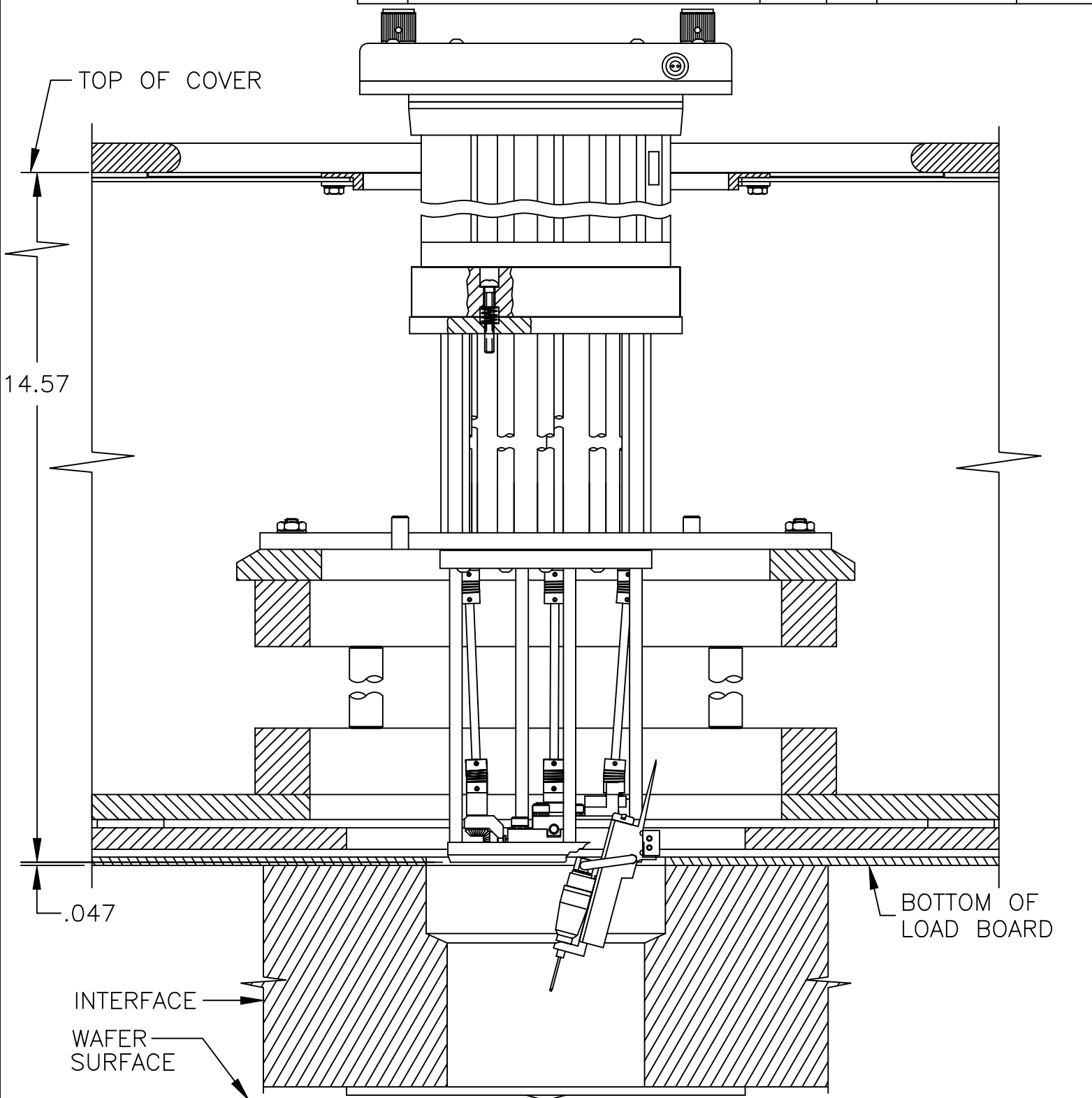
TITLE INKER KIT, X3317,
 REMOTE ADJUST, PNEUMATIC

| | | | | | |
|---|-------|--------|----------------------|-----|--|
| SEE SHEET 1 FOR NOTES AND TOLERANCE INFORMATION | | | DO NOT SCALE DRAWING | | |
| SIZE | SCALE | SHEET | DRAWING NUMBER | REV | |
| A | 1/2 | 3 OF 4 | 900-3317 | B | |

© Copyright Xandex Inc., All Rights Reserved.
 The information disclosed herein is deemed to be confidential, proprietary, and a trade secret of Xandex, Inc. This information may not be used, reproduced or disclosed without the express prior written consent of Xandex, Inc.

REVISIONS

| REV | DESCRIPTION | CHANGE NUMBER | BY | DATE | APPROVED |
|-----|-------------|---------------|----|------|----------|
| - | SEE SHEET 1 | - | - | - | - |



1125 N. McDOWELL BLVD.
 PETALUMA, CA 94954
 (707) 763 7799

TITLE INKER KIT, X3317,
 REMOTE ADJUST, PNEUMATIC

SEE SHEET 1 FOR NOTES
 AND TOLERANCE INFORMATION

DO NOT SCALE DRAWING

| | | |
|------|-------|--------|
| SIZE | SCALE | SHEET |
| A | 1/2 | 4 OF 4 |

| |
|----------------|
| DRAWING NUMBER |
| 900-3317 |

| |
|-----|
| REV |
| B |