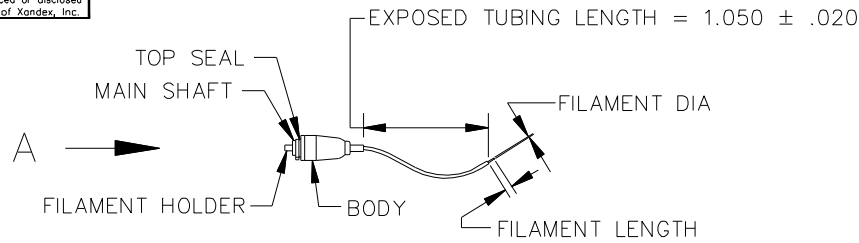


©Copyright Xandex Inc., All Rights Reserved.  
 The information disclosed herein is deemed to be confidential, proprietary, and a trade secret of Xandex, Inc. This information may not be used, reproduced or disclosed without the express prior written consent of Xandex, Inc.

REVISIONS

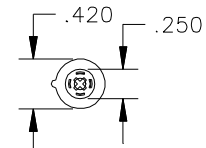
| REV | DESCRIPTION     | CHANGE NUMBER | BY  | DATE     | APPROVED |
|-----|-----------------|---------------|-----|----------|----------|
| A   | INITIAL RELEASE | 1776          | JMc | 01/25/99 |          |



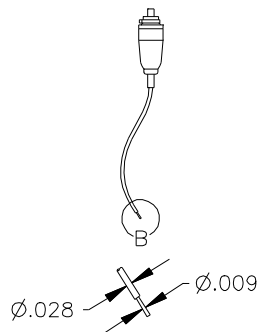
| MODEL | CARTRIDGE SIZE/TYPE | FILAMENT DIA NOM | FILAMENT LENGTH <sup>1</sup> | NEEDLE O.D. ±.0008 |
|-------|---------------------|------------------|------------------------------|--------------------|
| DM-S  | 10/FILAMENT         | 9.0 MIL          | .120-.125                    | .0280              |
| DM-S  | 15/FILAMENT         | 11.0 MIL         | .120-.125                    | .0280              |

10 MIL DM-S

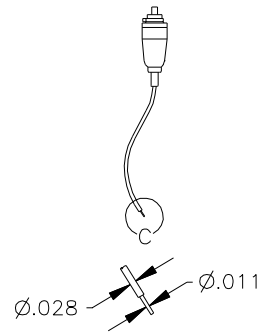
15 MIL DM-S



DETAIL A  
 SCALE: 2-1




DETAIL B  
 SCALE: 2-1



DETAIL C  
 SCALE: 2-1

NOTES:

<sup>1</sup> FILAMENT LENGTH APPLIES WHEN THE CARTRIDGE IS SEALED AND THE FILAMENT HOLDER IS PRESSED AGAINST THE MAIN SHAFT.

| APPROVALS | DATE    | ITEM  | QTY | PART NUMBER | DESCRIPTION  |
|-----------|---------|---|-----|-------------|--|
| DRAWN JMc | 1/25/99 | INTERPRET DRAWING PER ASME Y14.5M-1994                                  |     |             |  1125 N. McDOWELL BLVD.<br>PETALUMA, CA 94954<br>(707) 763 7799 |
| CHECKED   |         | TOLERANCES UNLESS OTHERWISE SPECIFIED DIMENSIONS ARE IN INCHES DECIMALS |     |             |  |
| O.C.      |         | NEXT ASSEMBLIES.....USED ON   |     |             | TITLE DM-S CARTRIDGE OUTLINE DRAWING   |
| ENGRG     |         | 1 PL ± FRACTIONS ±  |     |             | DO NOT SCALE DRAWING   |
| MFG ENGRG |         | 2 PL ± ANGLES ±   |     |             | SIZE B SCALE 1/1 SHEET 1 of 1 DRAWING NUMBER 901-0040 REV A  |
|           |         | 3 PL ± ALL SURFACES ✓   |     |             |  |
|           |         | 4 PL ±  |     |             |  |