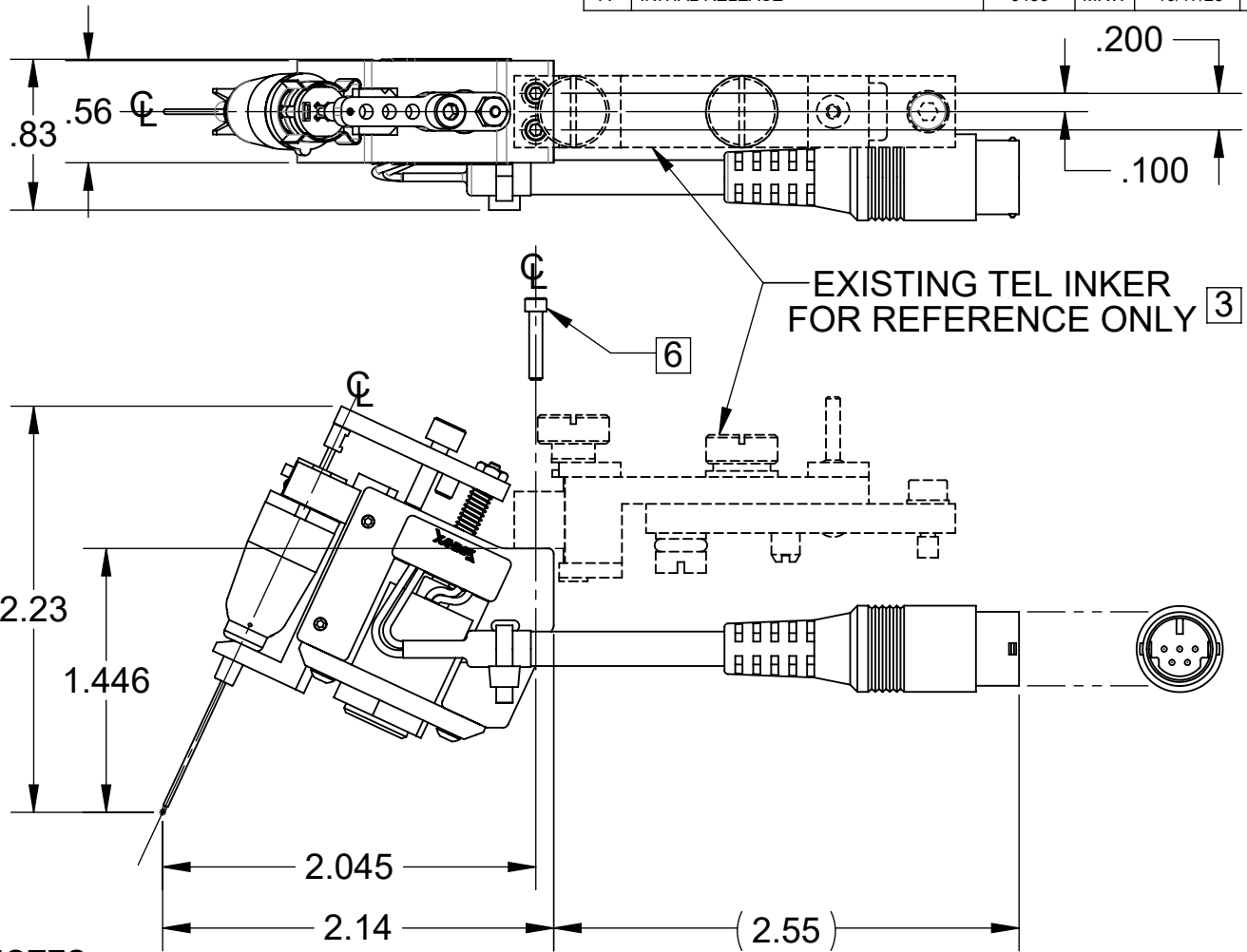


© Copyright Xandex Inc. All Rights Reserved. The information disclosed herein is deemed to be confidential, proprietary, and a trade secret of Xandex, Inc. This information may not be used, reproduced or disclosed without the expressed prior written consent of Xandex, Inc.

REVISIONS

REV	DESCRIPTION	CHANGE NUMBER	BY	DATE	APPROVED
A	INITIAL RELEASE	0453	MRW	10/17/23	



NOTES:

- INKER IS FOR USE ON TEL P8 SERIES PROBERS.
- INKER INSTALLS ON THE SACC, SINGLE ACTING CARD CHANGER ARM.
- INKER IS RETROFITTED TO EXISTING TEL INKER SEE REFERENCE.
- IN FACTORY SETTING, SHUTTLE TRAVELS .050 NOMINAL FROM POSITION SHOWN TO DEPOSIT INK ON WAFER.
- INKER USES DM-1 OR DM-1.25 TYPE INK CARTRIDGES.
- MOUNT INKER ASSEMBLIES TO PROBER USING (2) 1-64 X 3/8 LONG SOCKET HEAD SCREWS (SUPPLIED).
- ORDER INKER KIT PART NUMBER 315-0010

APPROVALS	DATE	INTERPRET DRAWING PER ASME Y14.5M-1994		1360 REDWOOD WAY, SUITE A PETALUMA, CA 94954 (707) 763-7799			
DRAWN	MRW 10/5/2023			TITLE			
CHECKED	File Approved per DCA#231	TOLERANCES	OD DWG, INKER S3-12C10, P8 STRAIGHT CONNECTOR				
ENGRG	K.FEEBLES 10/5/2023	UNLESS OTHERWISE SPECIFIED DIMENSIONS ARE IN INCHES					
NEXT ASSEMBLIES.....USED ON		DECIMALS 1 PL ±.1 2 PL ±.03 3 PL ±.010	FRACTIONS ± ANGLES ± 1° 63° ALL SURFACES	DO NOT SCALE DRAWING			
	THIRD ANGLE PROJECTION		SIZE	SCALE	SHEET	DRAWING NUMBER	REV
			A	1:1	1 OF 1	900-0010	A