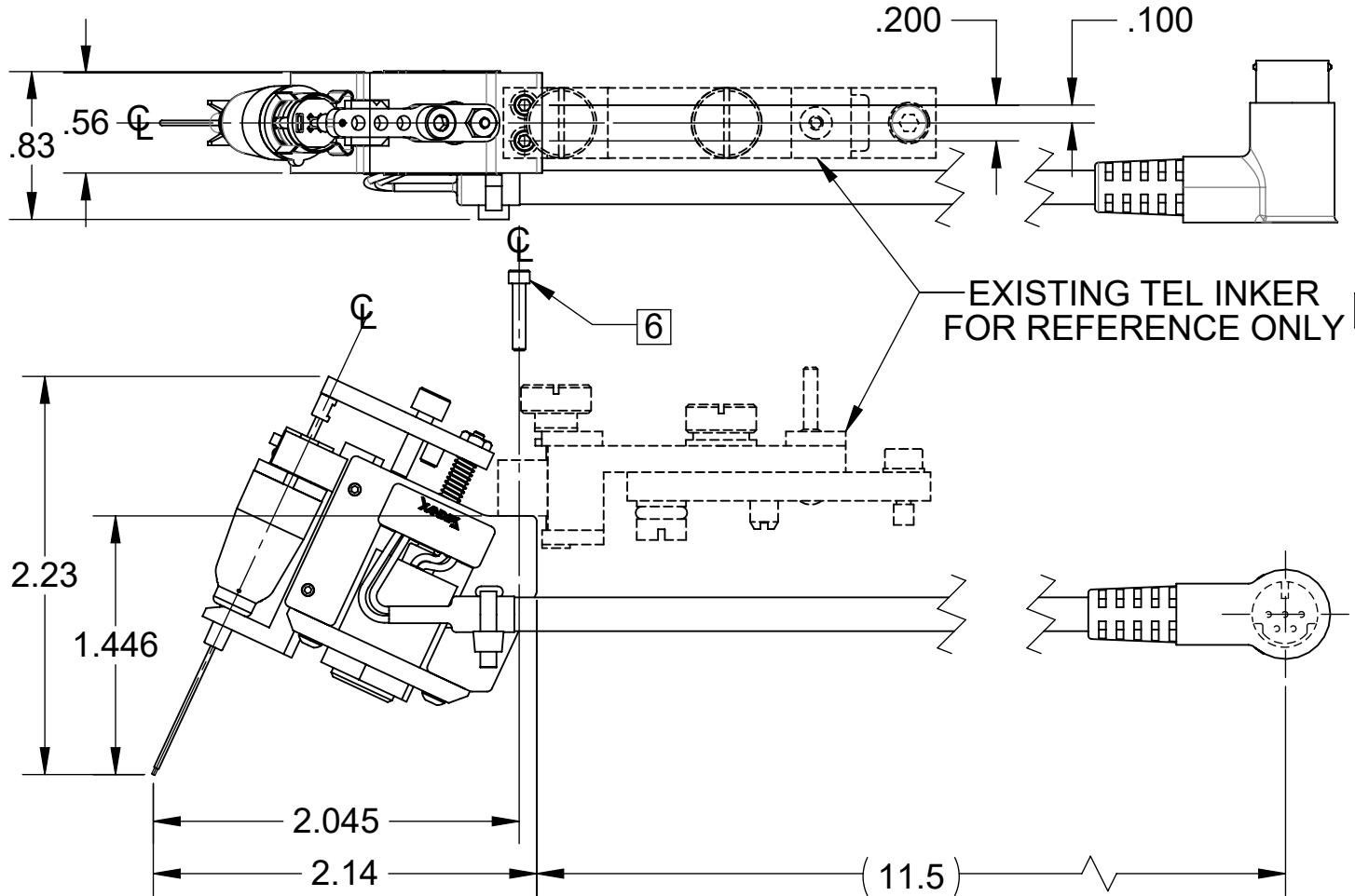


© Copyright Xandex Inc. All Rights Reserved. The information disclosed herein is deemed to be confidential, proprietary, and a trade secret of Xandex, Inc. This information may not be used, reproduced or disclosed without the expressed prior written consent of Xandex, Inc.

REVISIONS

REV	DESCRIPTION	CHANGE NUMBER	BY	DATE	APPROVED
A	INITIAL RELEASE	0453	MRW	10/02/23	



NOTES:

- INKER IS FOR USE ON TEL P8 SERIES PROBERS.
- INKER INSTALLS ON THE PROBER OPTICAL BRIDGE.
- INKER IS RETROFITTED TO EXISTING TEL INKER SEE REFERANCE.
- IN FACTORY SETTING, SHUTTLE TRAVELS .050 NOMINAL FROM POSITION SHOWN TO DEPOSIT INK ON WAFER.
- INKER USES DM-1 OR DM-1.25 TYPE INK CARTRIDGES.
- MOUNT INKER ASSEMBLIES TO PROBER USING (2) 1-64 X 3/8 LONG SOCKET HEAD SCREWS (SUPPLIED).
- ORDER INKER KIT PART NUMBER 315-0011

APPROVALS	DATE
DRAWN	MRW 9/23/2023
CHECKED	File Approved per DCA#231
ENGRG	K.F. EBLES 9/25/2023
NEXT ASSEMBLIES.....USED ON	
THIRD ANGLE PROJECTION	

INTERPRET DRAWING PER ASME Y14.5M-1994	
TOLERANCES UNLESS OTHERWISE SPECIFIED DIMENSIONS ARE IN INCHES	
DECIMALS	FRACTIONS ±
1 PL ±.1	ANGLES ± 1°
2 PL ±.03	
3 PL ±.010	63 ALL SURFACES

**XANDEX INC.** 1360 REDWOOD WAY, SUITE A  
 PETALUMA, CA 94954  
 (707) 763-7799

TITLE  
**OD DWG, INKER S3-12C10,  
 P-8, 90° CONNECTOR**

DO NOT SCALE DRAWING

SIZE <b>A</b>	SCALE <b>1:1</b>	SHEET <b>1 OF 1</b>	DRAWING NUMBER <b>900-0011</b>	REV <b>A</b>
------------------	---------------------	------------------------	-----------------------------------	-----------------