


©Copyright Xandex Inc., All Rights Reserved.
 The information disclosed herein is deemed to be confidential, proprietary, and a trade secret of Xandex, Inc. This information may not be used, reproduced or disclosed without the express prior written consent of Xandex, Inc.

REVISIONS

| REV | DESCRIPTION | CHANGE NUMBER | BY | DATE | APPROVED |
|-----|--------------------|---------------|-----|----------|-----------|
| H | UPDATE TITLE BLOCK | 4366 | MRW | 11/30/17 | <i>JB</i> |

NOTES:

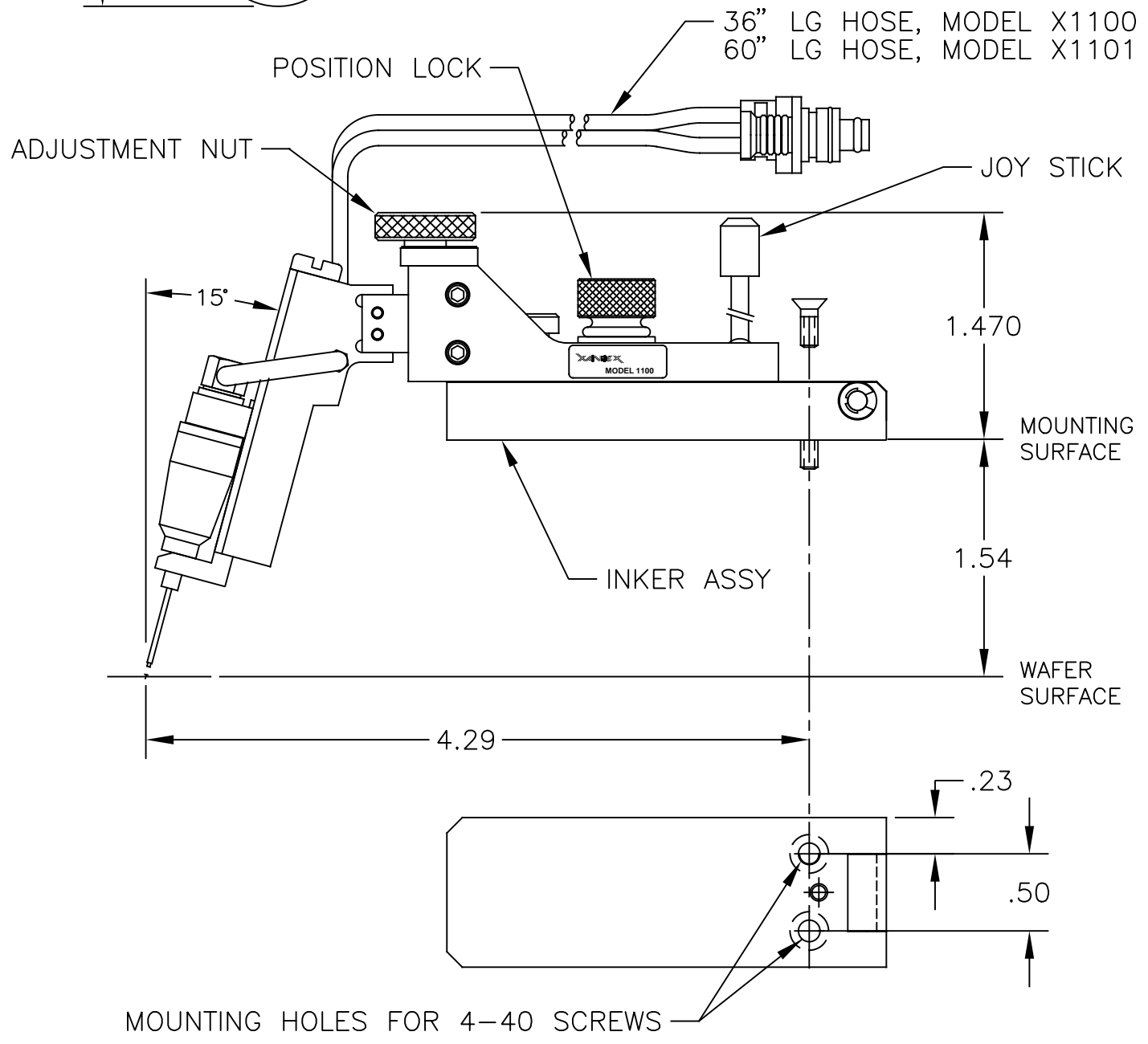
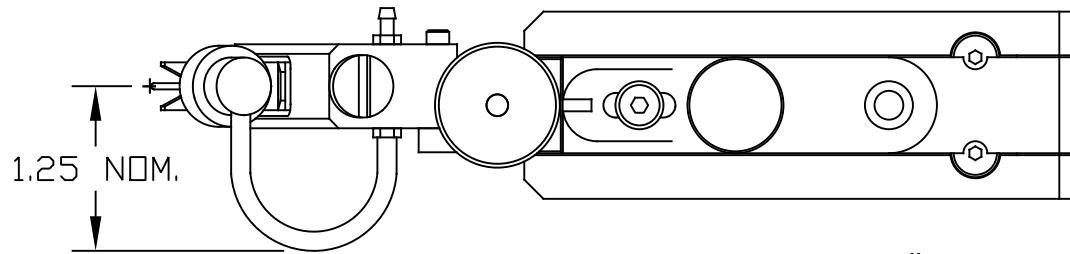
1. INKER FOR ELECTROGLAS PROBER, OFF LINE OR CABLED PROBING.
2. THIS INKER USES THE DM-2 CARTRIDGE ONLY.
3. INKER ARM IS ADJUSTABLE ALONG THE "Z" AXIS BY $\pm .188$.
4. JOYSTICK PROVIDES "X" AND "Y" AXIS MOVEMENT AT THE TIP OF THE CARTRIDGE NEEDLE.
5. ALL DIMENSIONS SHOWN WITH ADJUSTMENTS IN NEUTRAL POSITION.
6. INKER MOUNTS TO THE PROBER USING (2) 4-40 X 5/16 FLAT HEAD SCREWS (SUPPLIED).
7. ORDER KIT NUMBER 340-1100, OR ORDER KIT NUMBER 340-1101 (INCLUDES CONTROLLER RACKMOUNT FOR EG 20XX PROBERS).

| APPROVALS | DATE | ITEM | QTY | PART NUMBER | DESCRIPTION |
|-----------------------------|----------|---|-------|-------------|--|
| DRAWN JMc | 07/19/96 | INTERPRET DRAWING PER ASME Y14.5M-1994 | | |  1360 REDWOOD WAY, SUITE A PETALUMA, CA 94954 (707) 763 7799 |
| CHECKED <i>D. Teglia</i> | 12/17/17 | TOLERANCES UNLESS OTHERWISE SPECIFIED | | | |
| ENGRG D. TEGLIA | 08/05/96 | | | | |
| NEXT ASSEMBLIES.....USED ON | | DIMENSIONS ARE IN INCHES <u>DECIMALS</u> | | | TITLE |
| 340-1100 340-1101 | | 1 PL \pm FRACTIONS \pm 2 PL $\pm .010$ ANGLES $\pm 1^\circ$ 3 PL $\pm .005$ 4 PL \pm | | | PNEUMATIC INKER, X1100/X1101 DO NOT SCALE DRAWING |
| | | SIZE | SCALE | SHEET | DRAWING NUMBER |
| | | A | 1/1 | 1 of 2 | 900-0076 |
| | | | | | REV |
| | | | | | H |

© Copyright Xandex Inc., All Rights Reserved.
 The information disclosed herein is deemed to be confidential, proprietary, and a trade secret of Xandex, Inc. This information may not be used, reproduced or disclosed without the express prior written consent of Xandex, Inc.

REVISIONS

| REV | DESCRIPTION | CHANGE NUMBER | BY | DATE | APPROVED |
|-----|-------------|---------------|----|------|----------|
| - | SEE SHEET 1 | - | - | - | - |



1360 REDWOOD WAY, SUITE A
 PETALUMA, CA 94954
 (707) 763 7799

TITLE PNEUMATIC INKER,
 X1100/X1101

| | | | | |
|---|--------------|-----------------|----------------------------|----------|
| SEE SHEET 1 FOR NOTES AND TOLERANCE INFORMATION | | | DO NOT SCALE DRAWING | |
| SIZE A | SCALE 1/1 | SHEET 2 OF 2 | DRAWING NUMBER 900-0076 | REV H |