

© Copyright Xandex Inc., All Rights Reserved.
 The information disclosed herein is deemed to be confidential, proprietary, and a trade secret of Xandex, Inc. This information may not be used, reproduced or disclosed without the express prior written consent of Xandex, Inc.

REVISIONS

REV	DESCRIPTION	CHANGE NUMBER	BY	DATE	APPROVED
F	REVISE NOTE 2 TO GENERIC TYPE SCREW	4386	MRW	06/29/18	<i>MRW</i>

NOTES:

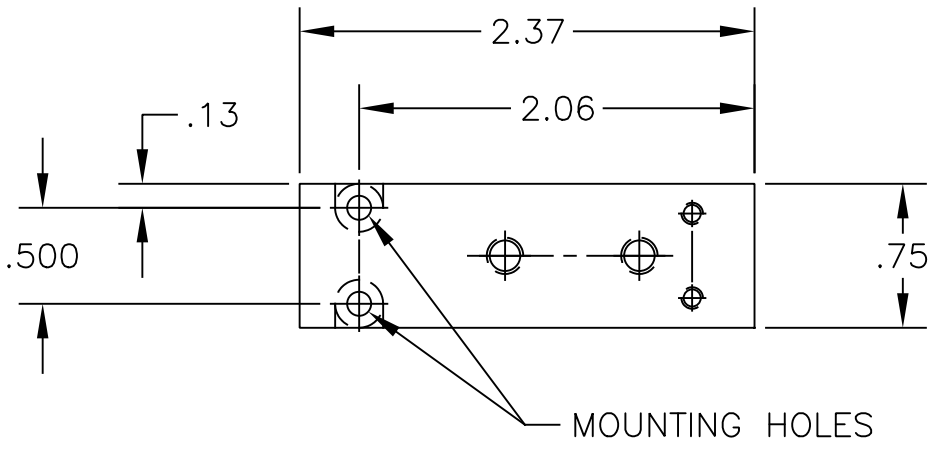
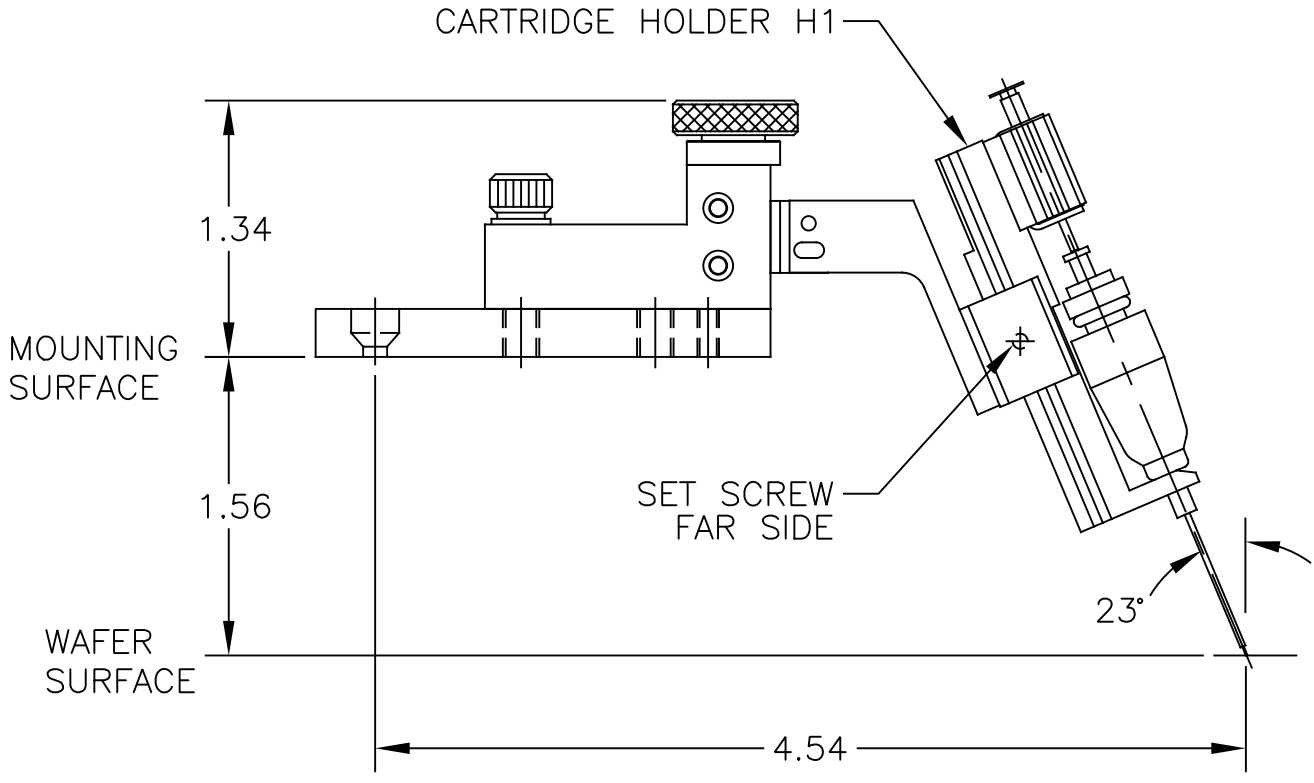
1. FOR USE WITH ELECTROGLAS PROBER MODELS 10XX, 20XX, AND 30XX. CABLED PROBING APPLICATION.
- F
 2. MOUNTING PLATE IS CONNECTED TO PROBER USING #4-40 FLAT HD. SCREWS SUPPLIED WITH ASSEMBLY.
3. THIS INKER USES THE DM-1 AND DM-1.25 CARTRIDGES ONLY.
4. INKER ARM IS ADJUSTABLE ALONG THE "Z" AXIS BY $\pm .187$.
5. THE MOUNTING ARM ANGLE OF APPROACH CAN BE ADJUSTED $\pm 10^\circ$.
6. ALL DIMENSIONS SHOWN WITH ADJUSTMENTS IN NEUTRAL POSITION.
7. HOLDER ALLOWS ADDITIONAL ADJUSTMENT OF "Z" AXIS BY MOVING SLIDE BRACKET.
8. COMPONENTS MAY BE ORDERED SEPARATELY: INKER BASE 101 (#320-0101). EG101 USES CARTRIDGE HOLDER H1-24A7 (#310-1212) AND FOR 5 MIL CARTRIDGES USE HOLDER H2-24A7 (#310-2212). NI101 USES CARTRIDGE HOLDER H1-12A7 (#310-1112) OR FOR 5 MIL CARTRIDGES USE HOLDER H2-12A7 (#310-2112).
9. FOR 5 MIL CARTRIDGES, RETROFIT CARTRIDGE HOLDER USING PLUNGER STOP ASSEMBLY #210-0016.

APPROVALS	DATE	ITEM	QTY	PART NUMBER	DESCRIPTION	
DRAWN HOLLY G.	10/23/95			INTERPRET DRAWING PER ASME Y14.5M-1994	 1360 REDWOOD WAY, SUITE A PETALUMA, CA 94954 (707) 763 7799	
CHECKED <i>[Signature]</i>	7/3/18			TOLERANCES UNLESS OTHERWISE SPECIFIED		
ENGRG DAVE T.	12/01/95			DIMENSIONS ARE IN INCHES <u>DECIMALS</u>		
NEXT ASSEMBLIES.....USED ON					TITLE INKER MODEL EG101/NI101 (KIT 330-0101, 330-9401)	
1 PL \pm FRACTIONS \pm 2 PL \pm ANGLES \pm 3 PL \pm 4 PL \pm <input checked="" type="checkbox"/> ALL SURFACES					DO NOT SCALE DRAWING	
		SIZE	SCALE	SHEET	DRAWING NUMBER	REV
		A	1/1	1 of 2	900-0089	F

© Copyright Xandex Inc., All Rights Reserved.
 The information disclosed herein is deemed to be confidential, proprietary, and a trade secret of Xandex, Inc. This information may not be used, reproduced or disclosed without the express prior written consent of Xandex, Inc.

REVISIONS

REV	DESCRIPTION	CHANGE NUMBER	BY	DATE	APPROVED
-	SEE SHEET 1				



1360 REDWOOD WAY, SUITE A
 PETALUMA, CA 94954
 (707) 763 7799

TITLE INKER MODEL EG101/NI101
 (KIT 330-0101, 330-9401)

SEE SHEET 1 FOR NOTES AND TOLERANCE INFORMATION			DO NOT SCALE DRAWING	
SIZE A	SCALE 1/1	SHEET 2 OF 2	DRAWING NUMBER 900-0089	REV F