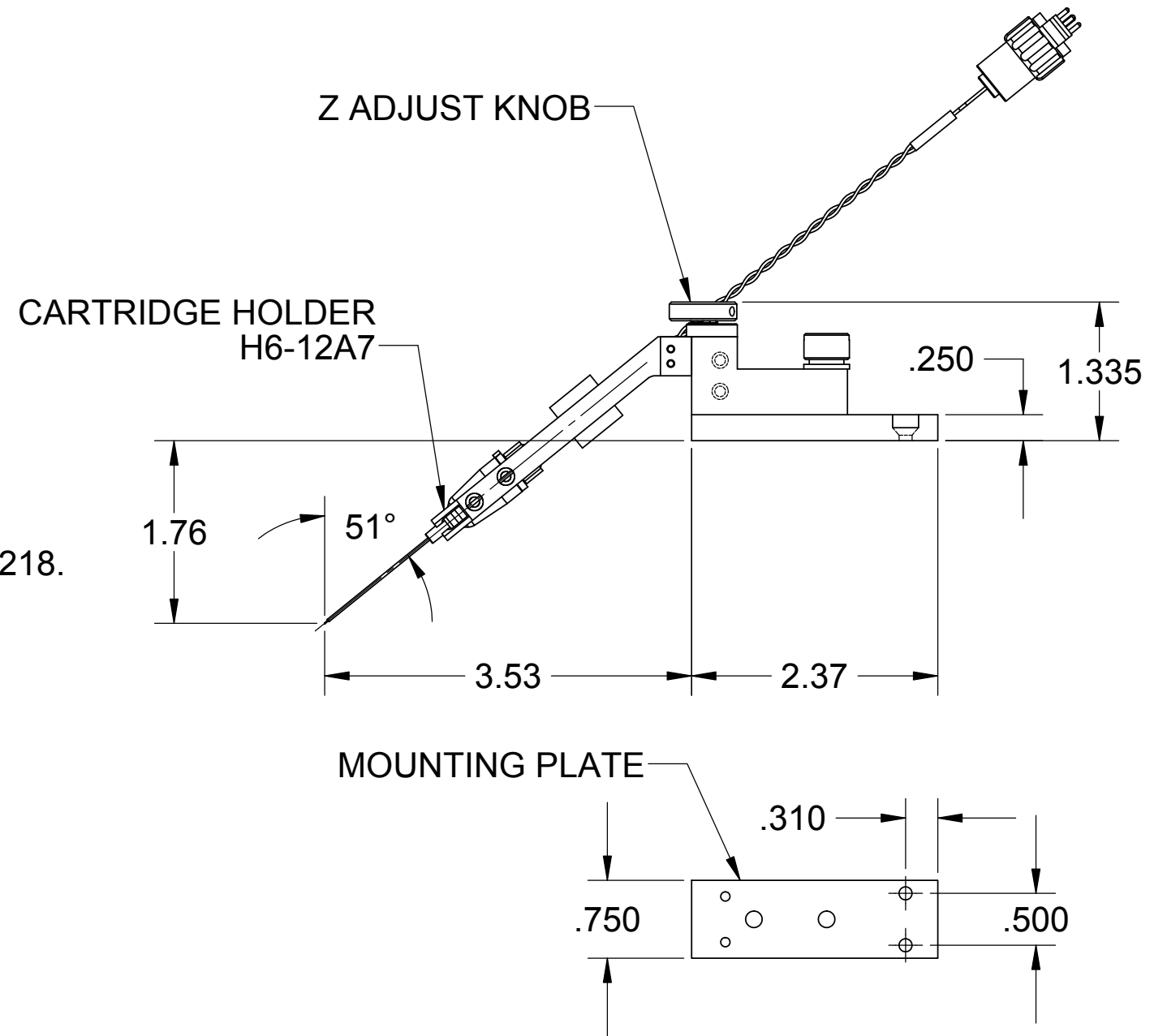



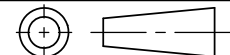
© Copyright Xandex Inc., All Rights Reserved. The information disclosed herein is deemed to be confidential, proprietary, and a trade secret of Xandex, Inc. This information may not be used, reproduced or disclosed without the expressed prior written consent of Xandex, Inc.

REVISIONS					
REV	DESCRIPTION	CHANGE NUMBER	BY	DATE	APPROVED
D	REDRAWN TO SOLIDWORKS (WHICH CORRECTED ERRANT VIEW ECR 0759)	4225	MRW	01/20/15	



NOTES:

1. FOR USE WITH TERADYNE LASER TRIMMER MODELS M118 AND M218. CABLED PROBING APPLICATION.
2. MOUNTING PLATE IS CONNECTED TO PROBER USING TWO 4-40 X 5/16 FLAT HEAD SCREWS.
3. THIS INKER USES THE DM-1.25 CARTRIDGES ONLY.
4. INKER ARM IS ADJUSTABLE ALONG THE Z AXIS BY $\pm .187$.
5. ALL DIMENSIONS SHOWN WITH ADJUSTMENTS IN NEUTRAL POSITION.
6. HOLDER ALLOWS ADDITIONAL ADJUSTMENT OF "Z" AXIS BY MOVING SLIDE BRACKET.
7. COMPONENTS MAY BE ORDERED SEPARATELY: INKER BASE 105 (\leftrightarrow 320-0105) AND CARTRIDGE HOLDER H6-12A7 (\leftrightarrow 310-6112).
8. FOR 5 MIL CARTRIDGES, RETROFIT CARTRIDGE HOLDER USING PLUNGER STOP ASSEMBLY \leftrightarrow 210-0016.

APPROVALS	DATE	INTERPRET DRAWING PER ASME Y14.5M-1994	 1360 REDWOOD WAY, SUITE A PETALUMA, CA 94954 (707) 763-7799				
DRAWN	MRW 1/20/2015	TOLERANCES UNLESS OTHERWISE SPECIFIED DIMENSIONS ARE IN INCHES					
CHECKED		DECIMALS	INKER MODEL LT105 (KIT #330-0105)				
ENGRG	D.TEGLIA 1/20/2015	1PL $\pm .1$ FRACTIONS \pm					
NEXT ASSEMBLIES.....USED ON		2PL $\pm .01$ ANGLES $\pm 1^\circ$	DO NOT SCALE DRAWING				
		3PL $\pm .005$					
		4PL \pm	SIZE	SCALE	SHEET	DRAWING NUMBER	REV
 THIRD ANGLE PROJECTION		63 \checkmark ALL SURFACES	B	1:1.5	1 OF 1	900-0093	D