


©Copyright Xandex Inc., All Rights Reserved.
 The information disclosed herein is deemed to be confidential, proprietary, and a trade secret of Xandex, Inc. This information may not be used, reproduced or disclosed without the express prior written consent of Xandex, Inc.

REVISIONS

REV	DESCRIPTION	CHANGE NUMBER	BY	DATE	APPROVED
E	UPDATE TITLE BLOCK	4366	MRW	11/30/17	<i>JB</i>

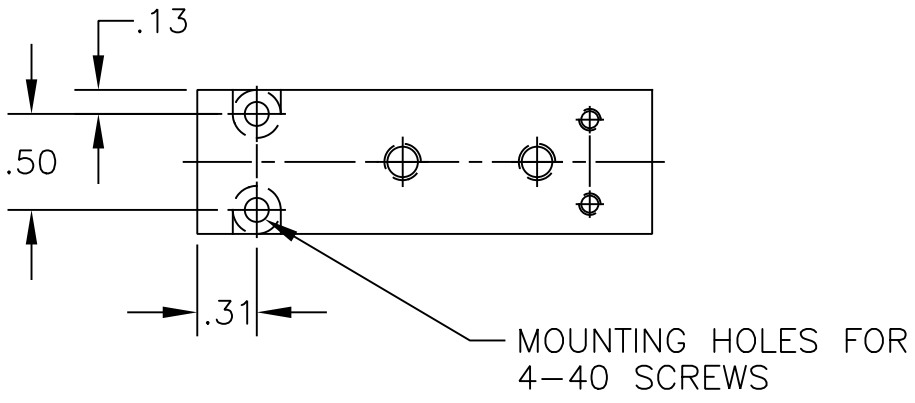
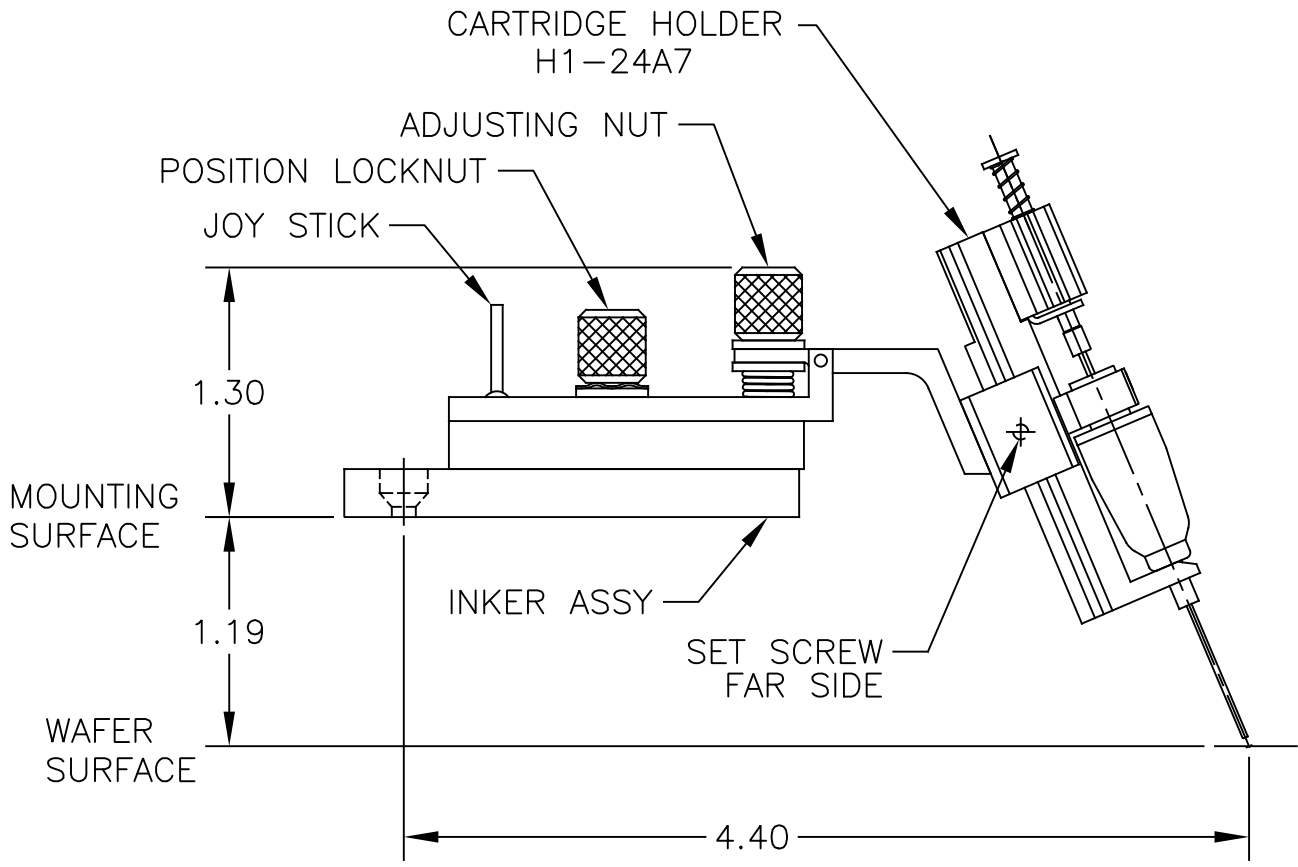
NOTES:

1. FOR USE WITH ELECTROGLAS PROBER MODELS 10XX, 20XX, AND 30XX. CABLED PROBING APPLICATION.
2. MOUNTING PLATE IS CONNECTED TO INTERFACE USING TWO 4-40 X 5/16 FHP SCREWS.
3. THIS INKER USES THE DM-1 AND DM-1.25 CARTRIDGES ONLY.
4. INKER ARM IS ADJUSTABLE ALONG THE Z AXIS BY ±.187.
5. THE JOY STICK PROVIDES X AND Y AXIS MOVEMENT AT THE TIP OF THE CARTRIDGE NEEDLE.
6. ALL DIMENSIONS SHOWN WITH ADJUSTMENTS IN NEUTRAL POSITION.
7. HOLDER ALLOWS ADDITIONAL ADJUSTMENT OF Z AXIS BY MOVING SLIDE BRACKET.
8. COMPONENTS MAY BE ORDERED SEPARATELY: INKER BASE 301 (#320-0301) AND CARTRIDGE HOLDER H1-24A7 (#310-1212). FOR 5 MIL CARTRIDGES USE HOLDER H2-24A7 (#310-2212).
9. FOR 5 MIL CARTRIDGES, RETROFIT CARTRIDGE HOLDER USING PLUNGER STOP ASSEMBLY #210-0016.

APPROVALS	DATE	ITEM	QTY	PART NUMBER	DESCRIPTION
DRAWN	HOLLY G.			INTERPRET DRAWING PER ASME Y14.5M-1994	 1360 REDWOOD WAY, SUITE A PETALUMA, CA 94954 (707) 763 7799
CHECKED	<i>[Signature]</i>			TOLERANCES UNLESS OTHERWISE SPECIFIED	
ENGRG	DAVE T.				
NEXT ASSEMBLIES.....USED ON		DIMENSIONS ARE IN INCHES <u>DECIMALS</u>			TITLE
		1 PL± FRACTIONS± 2 PL± ANGLES± 3 PL± 4 PL± ✓ ALL SURFACES			INKER MODEL EG301 (KIT #330-0301)
DO NOT SCALE DRAWING					
SIZE	SCALE	SHEET	DRAWING NUMBER	REV	
A	1/1	1 of 2	900-0097	E	

REVISIONS

REV	DESCRIPTION	CHANGE NUMBER	BY	DATE	APPROVED
-	SEE SHEET 1				



1360 REDWOOD WAY, SUITE A
 PETALUMA, CA 94954
 (707) 763 7799

TITLE INKER MODEL EG301
 (KIT #330-0301)

SEE SHEET 1 FOR NOTES AND TOLERANCE INFORMATION			DO NOT SCALE DRAWING	
SIZE A	SCALE 1/1	SHEET 2 OF 2	DRAWING NUMBER 900-0097	REV E