


© Copyright Xandex Inc., All Rights Reserved.
 The information disclosed herein is deemed to be confidential, proprietary, and a trade secret of Xandex, Inc. This information may not be used, reproduced or disclosed without the express prior written consent of Xandex, Inc.

REVISIONS

REV	DESCRIPTION	CHANGE NUMBER	BY	DATE	APPROVED
F	UPDATE TITLE BLOCK	4366	MRW	11/30/17	<i>JB</i>

NOTES:

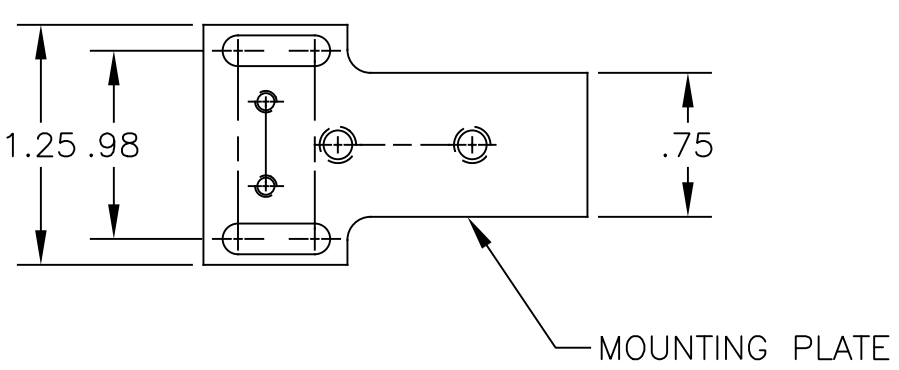
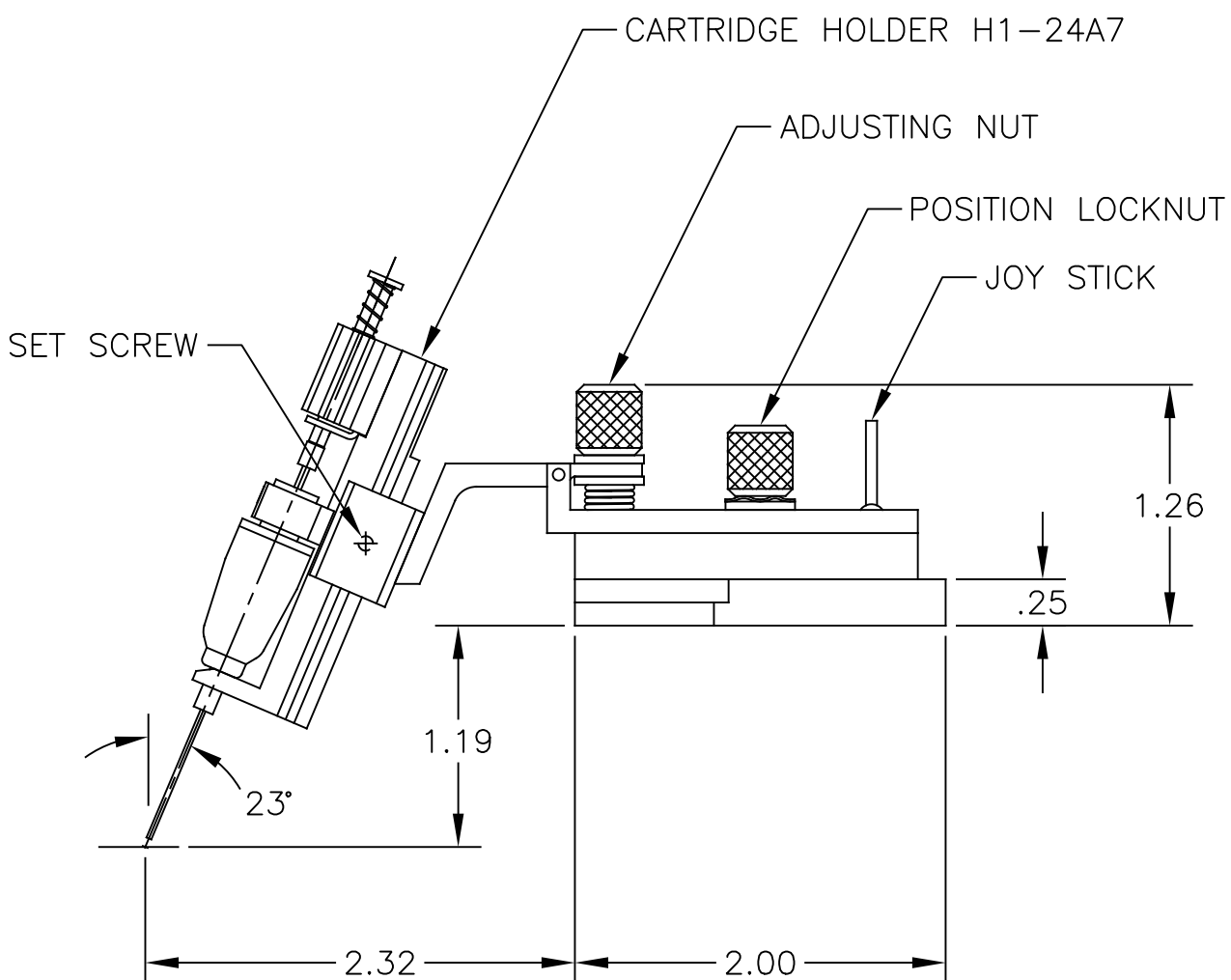
1. FOR USE WITH PACIFIC WESTERN SYSTEMS PROBERS.
2. MOUNTING PLATE IS CONNECTED TO INTERFACE USING TWO 6-32 X 1/4 PAN HD SLOT SCREWS.
3. THIS INKER USES THE DM-1 AND DM-1.25 CARTRIDGES ONLY.
4. INKER ARM IS ADJUSTABLE ALONG THE "Z" AXIS BY ±.187.
5. THE JOY STICK PROVIDES X AND Y AXIS MOVEMENT AT THE TIP OF THE CARTRIDGE NEEDLE.
6. ALL DIMENSIONS SHOWN WITH ADJUSTMENTS IN NEUTRAL POSITION.
7. HOLDER ALLOWS ADDITIONAL ADJUSTMENT OF "Z" AXIS BY MOVING SLIDE BRACKET.
8. COMPONENTS MAY BE ORDERED SEPARATELY: INKER BASE 302 (#320-0302) AND CARTRIDGE HOLDER H1-24A7 (#310-1212). FOR 5 MIL CARTRIDGES USE HOLDER H2-24A7 (#310-2212).
9. FOR 5 MIL CARTRIDGES, RETROFIT CARTRIDGE HOLDER USING PLUNGER STOP ASSEMBLY #210-0016.

APPROVALS	DATE	ITEM	QTY	PART NUMBER	DESCRIPTION
DRAWN T. RUFF CHECKED <i>[Signature]</i> ENGRG DAVE T.	01/23/97 12/7/17 02/05/97			INTERPRET DRAWING PER ASME Y14.5M-1994 TOLERANCES UNLESS OTHERWISE SPECIFIED DIMENSIONS ARE IN INCHES <u>DECIMALS</u> 1 PL ± FRACTIONS ± 2 PL ±.010 ANGLES ±1° 3 PL ±.005 4 PL ± 63/100 ALL SURFACES	 1360 REDWOOD WAY, SUITE A PETALUMA, CA 94954 (707) 763 7799
NEXT ASSEMBLIES.....USED ON					TITLE INKER MODEL PWS302 (KIT #330-2302)
					DO NOT SCALE DRAWING
		SIZE	SCALE	SHEET	DRAWING NUMBER
		A	1/1	1 of 2	900-0098
					REV F

© Copyright Xandex Inc., All Rights Reserved.
 The information disclosed herein is deemed to be confidential, proprietary, and a trade secret of Xandex, Inc. This information may not be used, reproduced or disclosed without the express prior written consent of Xandex, Inc.

REVISIONS

REV	DESCRIPTION	CHANGE NUMBER	BY	DATE	APPROVED
-	SEE SHEET 1				



1360 REDWOOD WAY, SUITE A
 PETALUMA, CA 94954
 (707) 763 7799

TITLE INKER MODEL PWS302
 (KIT #330-2302)

SEE SHEET 1 FOR NOTES AND TOLERANCE INFORMATION			DO NOT SCALE DRAWING		
SIZE A	SCALE 1/1	SHEET 2 OF 2	DRAWING NUMBER 900-0098	REV F	