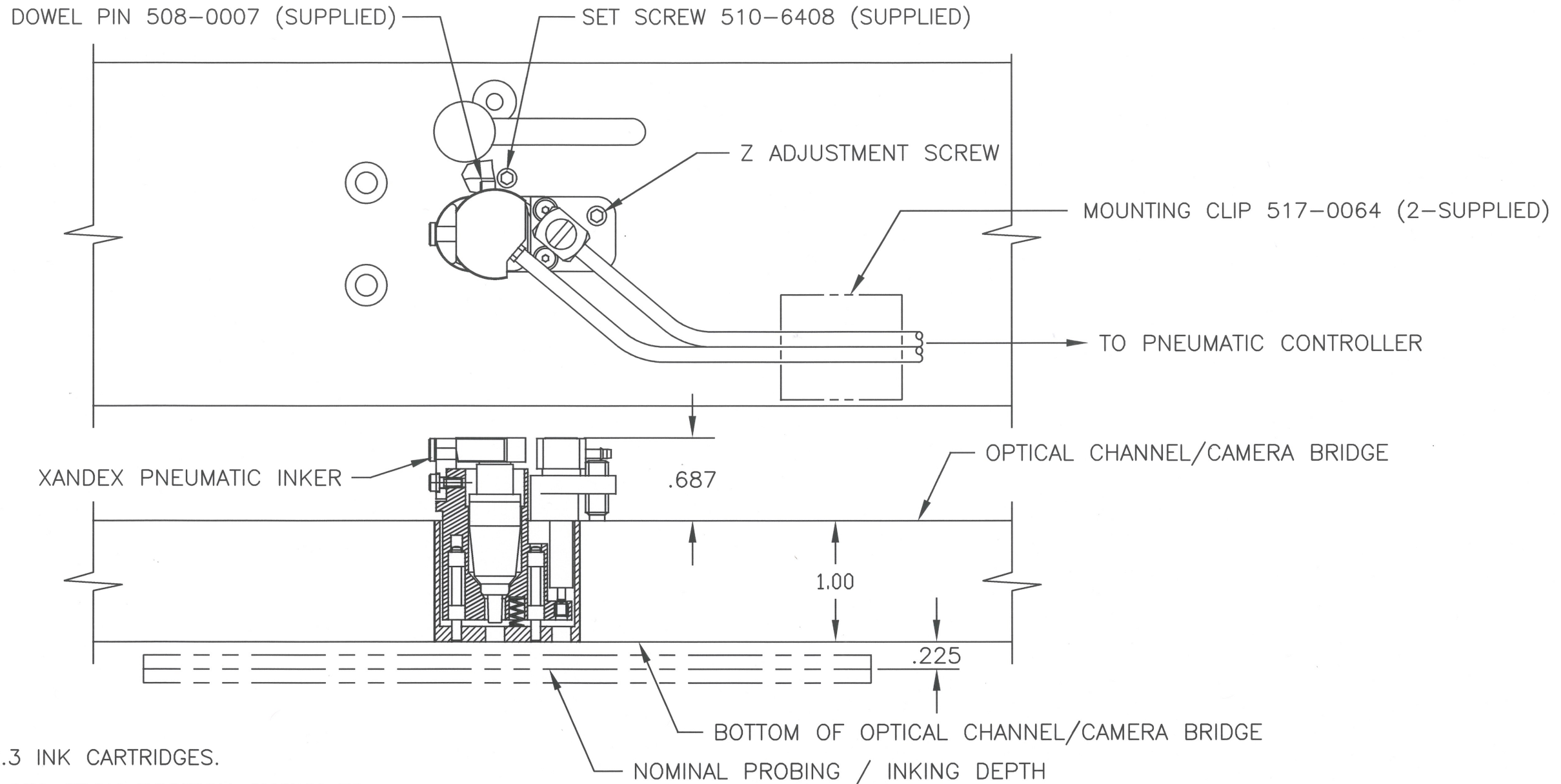



©Copyright Xandex Inc., All Rights Reserved.
 The information disclosed herein is deemed to be confidential, proprietary, and a trade secret of Xandex, Inc. This information may not be used, reproduced or disclosed without the express prior written consent of Xandex, Inc.

REVISIONS					
REV	DESCRIPTION	CHANGE NUMBER	BY	DATE	APPROVED
E	UPDATE TITLE BLOCK	4366	MRW	12/04/17	<i>JB</i>



NOTES:

1. INKER USES DM-2.3 INK CARTRIDGES.
2. SHUTTLE TRAVELS .050 FROM POSITION SHOWN TO DEPOSIT INK ON WAFER. INKER IS SHOWN IN NOMINAL INKING POSITION WITH Z ADJUSTMENT CAPABILITY OF +/- .190 INCHES.
3. INKER INSTALLS INTO STANDARD INKER MOUNT ON EG OPTICAL CHANNEL (PART NO 252884).
4. INKER HAS NO X, Y ADJUSTMENT CAPABILITY.
5. FOR STANDARD INKER KIT, ORDER PART NUMBER 340-5100.
6. FOR X/Y INKER-DIE ALIGNMENT TOOL, ORDER PART NUMBER 120-0081.

APPROVALS	DATE	ITEM	QTY	PART NUMBER	DESCRIPTION
DRAWN DT	08/24/95	INTERPRET DRAWING			 1360 REDWOOD WAY, SUITE A PETALUMA, CA 94954 (707) 763 7799
CHECKED <i>J. Blomax</i>	12/7/17	TOLERANCES			
ENGRG DT	12/08/95	UNLESS OTHERWISE SPECIFIED			
NEXT ASSEMBLIES.....USED ON		DIMENSIONS ARE IN INCHES		TITLE	
340-5100		DECIMALS		INKER MODEL 5100	
		1 PL ± FRACTIONS ±		(EG 4080)	
		2 PL ± ANGLES ±		DO NOT SCALE DRAWING	
		3 PL ±		SIZE	
		4 PL ±		SCALE	
		✓ ALL SURFACES		SHEET	
				DRAWING NUMBER	
				REV	
				B 1/1 1 of 1 900-0165 E	