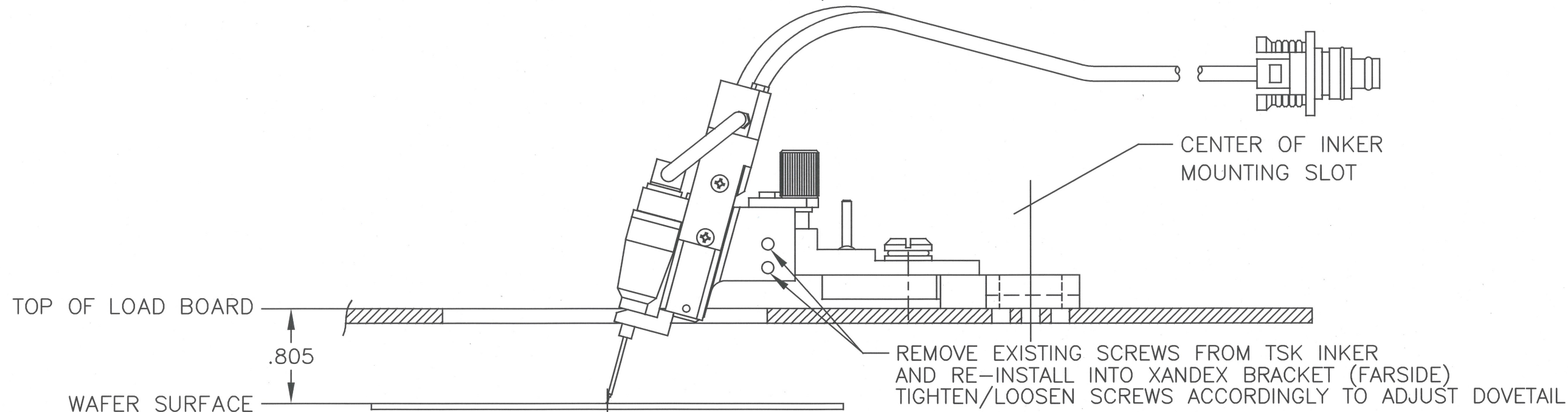
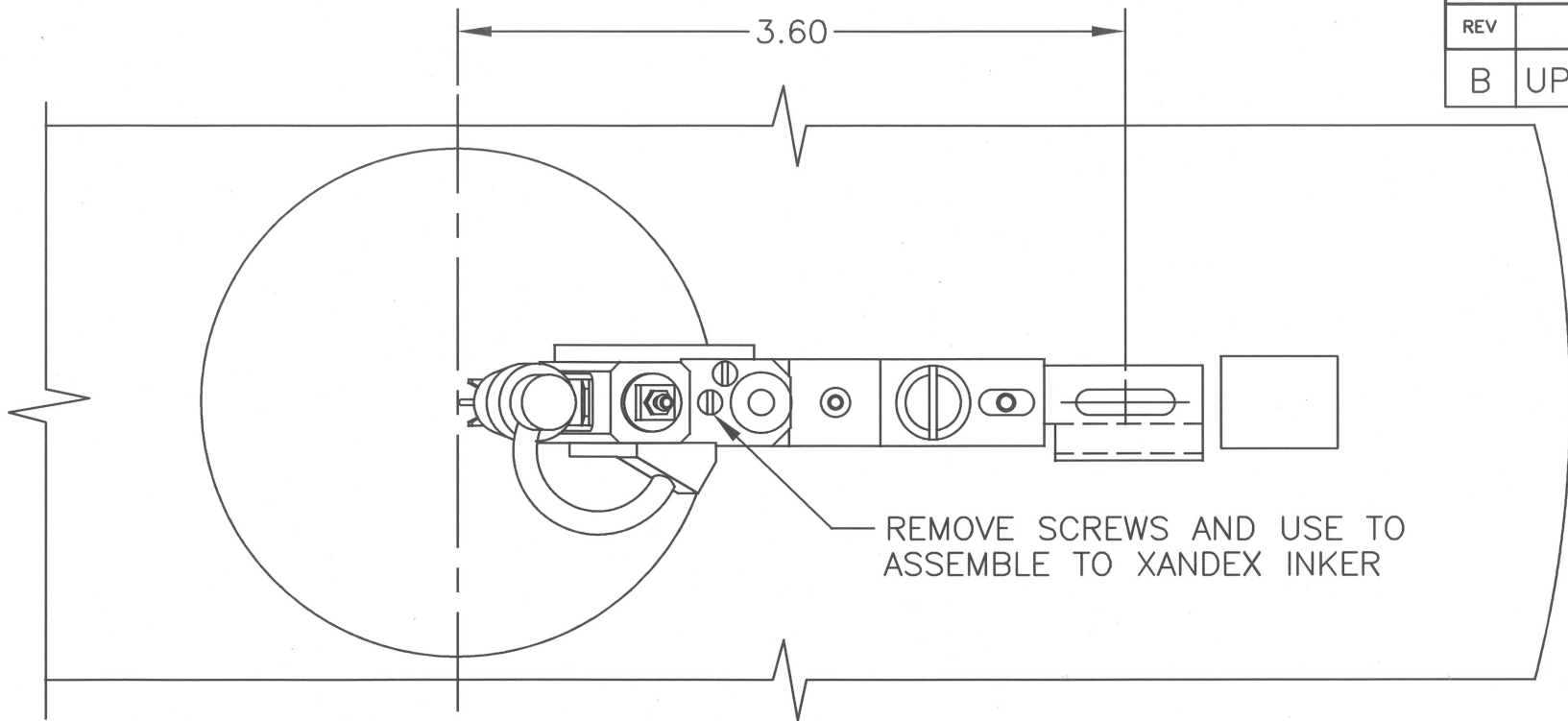


©Copyright 1992, Xandex Inc., All Rights Reserved.
 The information disclosed herein is deemed to be confidential, proprietary, and a trade secret of Xandex, Inc. This information may not be used, reproduced or disclosed without the expressed prior written consent of Xandex, Inc.


REVISIONS

REV	DESCRIPTION	CHANGE NUMBER	BY	DATE	APPROVED
B	UPDATE TITLE BLOCK	4366	MRW	12/04/17	<i>JB</i>



NOTES:

1. REMOVE EXISTING TSK INKER COMPONENTS UP TO AND INCLUDING THE FEMALE DOVETAIL BRACKET TO ALLOW INSTALLATION OF THE XANDEX INKER ASSEMBLY.
2. INKER USES DM-2 CARTRIDGES.
- 3 APPROXIMATELY +/- .150 Z TRAVEL FROM POSITION SHOWN
4. ORDER PART NUMBER 316-0005.

APPROVALS	DATE	ITEM	QTY	PART NUMBER	DESCRIPTION
DRAWN D. TEGLIA	08/31/95				 1360 REDWOOD WAY, SUITE A PETALUMA, CA 94954 (707) 763 7799
CHECKED <i>D. Teglia</i>	12/7/17				
ENGRG D. TEGLIA	09/22/95				
NEXT ASSEMBLIES.....USED ON		DIMENSIONS ARE IN INCHES		TITLE	
316-0005		DECIMALS		PNEUMATIC INKER, TSK-APM-88 RETROFIT "A"	
		1 PL ± FRACTIONS ±		DO NOT SCALE DRAWING	
		2 PL ± ANGLES ±		SIZE SCALE SHEET DRAWING NUMBER REV	
		3 PL ±		B 1/1 1 OF 1 900-0166 B	
		4 PL ± ALL SURFACES			