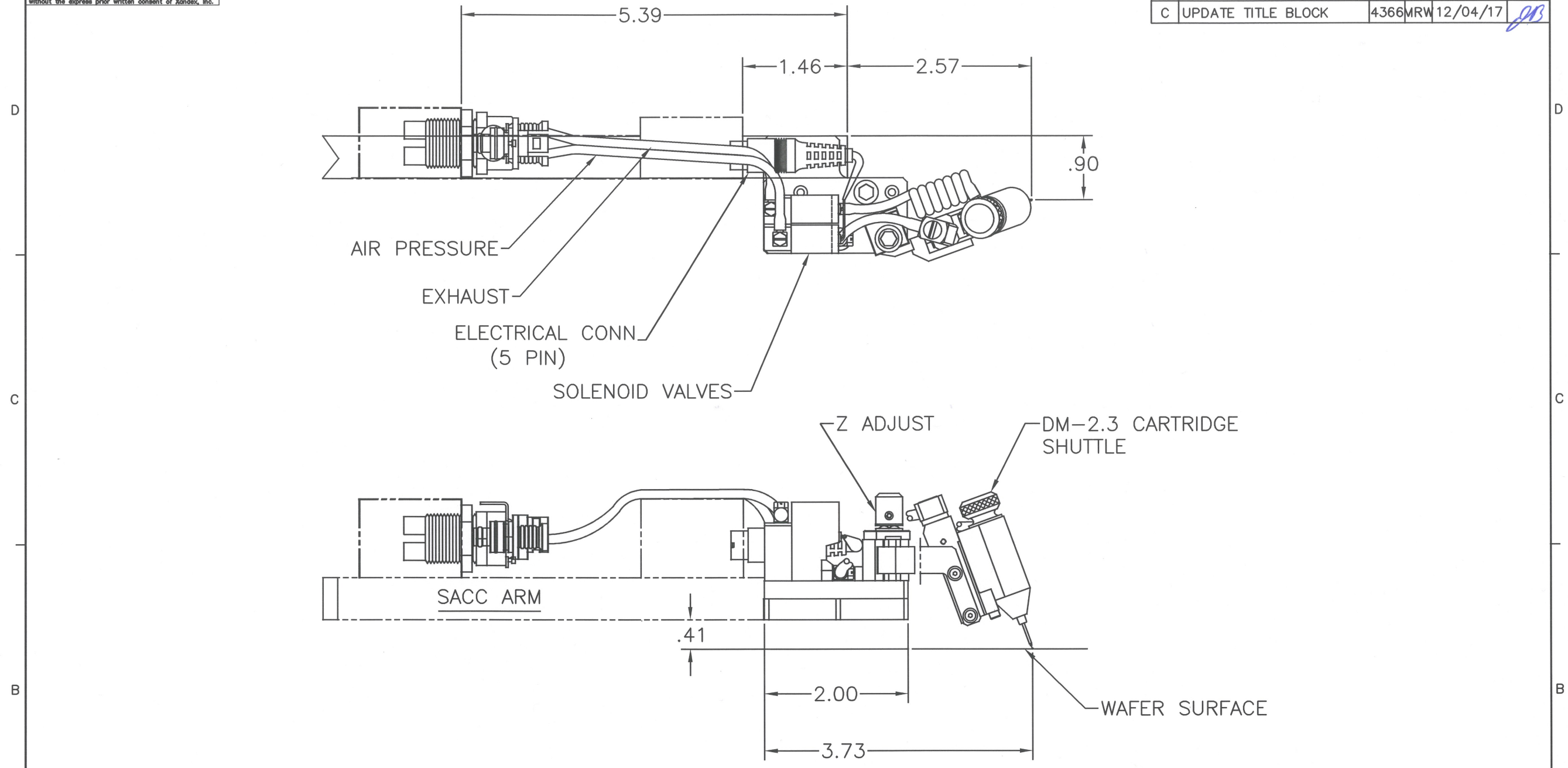



© Copyright Xandex Inc., All Rights Reserved.
 The information disclosed herein is deemed to be confidential, proprietary, and a trade secret of Xandex, Inc. This information may not be used, reproduced or disclosed without the express prior written consent of Xandex, Inc.

REVISIONS					
REV	DESCRIPTION	CHANGE NUMBER	BY	DATE	APPROVED
C	UPDATE TITLE BLOCK	4366	MRW	12/04/17	<i>MRW</i>



NOTES:

1. INKER IS FOR USE ON TEL P8 SERIES PROBERS.
2. INKER INSTALLS ON PROBER SACC ARM.
3. RETROFIT KIT IS REQUIRED, CONTACT TOKYO ELECTRON FOR FURTHER INFORMATION.
4. INKER USES DM2.3 CARTRIDGE.
5. SHUTTLE TRAVELS .050/.060 FROM POSITION SHOWN TO DEPOSIT INK ON WAFER, INKER IS SHOWN IN NOMINAL INKING POSITION WITH Z ADJUSTMENT CAPABILITY OF $\pm .100$
6. INKER HAS NO X-Y ADJUSTMENT CAPABILITY.
7. ORDER INKER KIT PART NUMBER 340-5200.

APPROVALS	DATE	ITEM	QTY	PART NUMBER	DESCRIPTION
DRAWN JMc	10/30/96	INTERPRET DRAWING			 1360 REDWOOD WAY, SUITE A PETALUMA, CA 94954 (707) 763 7799
CHECKED <i>D. Teglia</i>	12/7/17	PER ASME Y14.5M-1994			
ENGR D. TEGLIA	10/30/96	TOLERANCES			TITLE PNEUMATIC INKER, TEL P8
		UNLESS OTHERWISE SPECIFIED			SACC ARM
		DIMENSIONS ARE IN INCHES			DO NOT SCALE DRAWING
		DECIMALS			SIZE C
		1 PL \pm FRACTIONS \pm			SCALE 1/1
		2 PL $\pm .010$ ANGLES $\pm 1^\circ$			SHEET 1 of 1
		3 PL $\pm .005$			DRAWING NUMBER 900-5200
		4 PL \pm $\sqrt{63}$ ALL SURFACES			REV C
		NEXT ASSEMBLIES.....USED ON			
		340-5200			