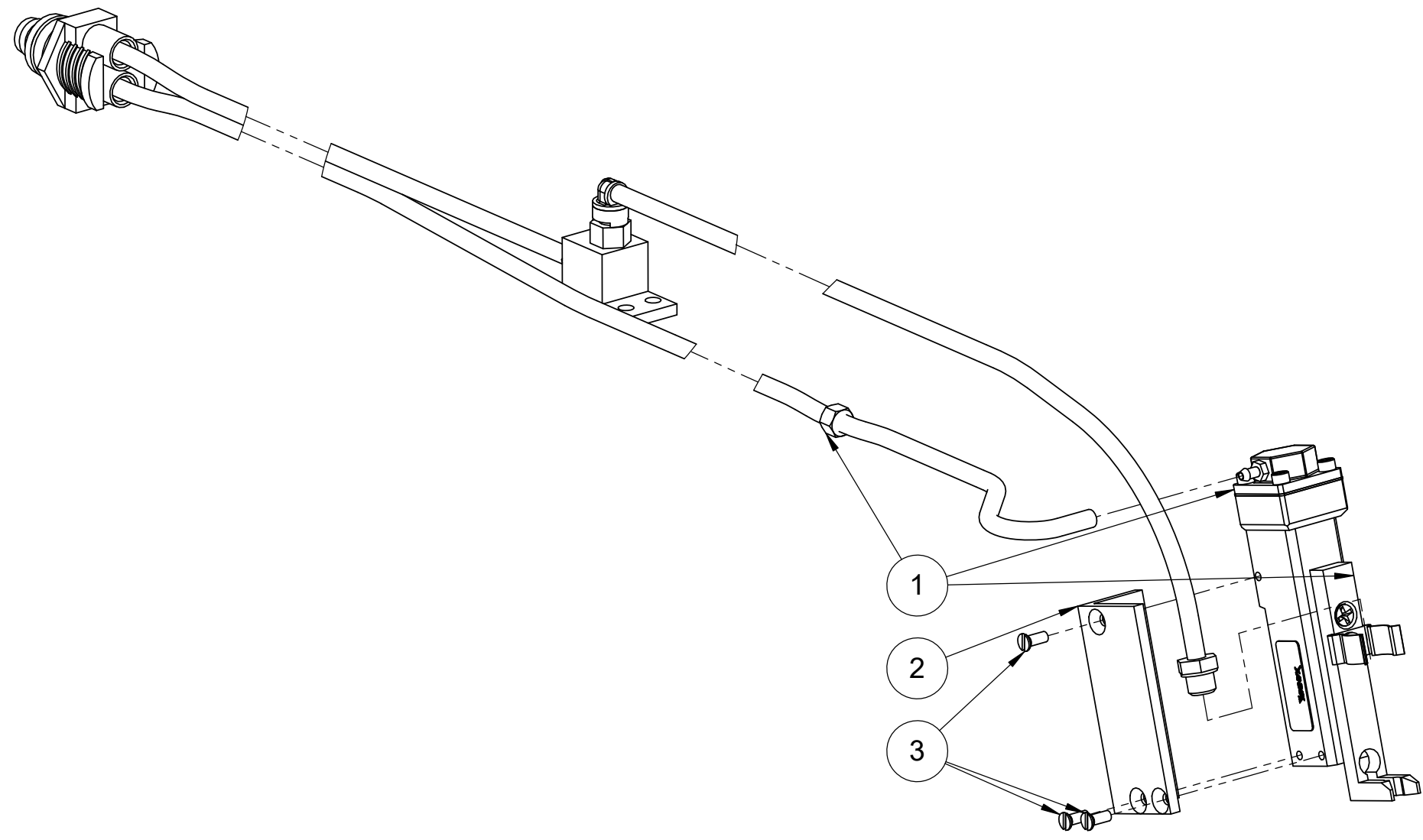



© Copyright Xandex Inc., All Rights Reserved. The information disclosed herein is deemed to be confidential, proprietary, and a trade secret of Xandex, Inc. This information may not be used, reproduced or disclosed without the expressed prior written consent of Xandex, Inc.

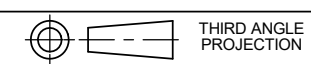
REVISIONS					
REV	DESCRIPTION	CHANGE NUMBER	BY	DATE	APPROVED
A	INITIAL RELEASE (3)	4526	MRW	05/16/22	



NOTES:

1. LOOSELY ASSEMBLE SHUTTLE (ITEM 1) TO BRACKET (ITEM 2) USING SCREWS (ITEM 3).

APPROVALS	DATE	<b>INTERPRET DRAWING PER ASME Y14.5M-1994</b>  <b>TOLERANCES</b> UNLESS OTHERWISE SPECIFIED DIMENSIONS ARE IN INCHES  DECIMALS      FRACTIONS ± 1 PL ±            ANGLES ± 2 PL ± 3 PL ±  ✓ ALL SURFACES	 1360 REDWOOD WAY, SUITE A PETALUMA, CA 94954 (707) 763-7799			
DRAWN	MRW - 2/22/2022					
CHECKED	<b>File Approved per DCA#147</b>		<b>TITLE</b> <b>KIT, PNEU SHUTTLE RETROFIT - X1410</b>			
ENGRG	J. THOMAS - 2/22/2022	DO NOT SCALE DRAWING				
NEXT ASSEMBLIES.....USED ON		SIZE	SCALE	SHEET	DRAWING NUMBER	REV
		<b>B</b>	<b>1:1</b>	<b>1 OF 2</b>	<b>355-1122</b>	<b>A</b>



8

7

6

5

4

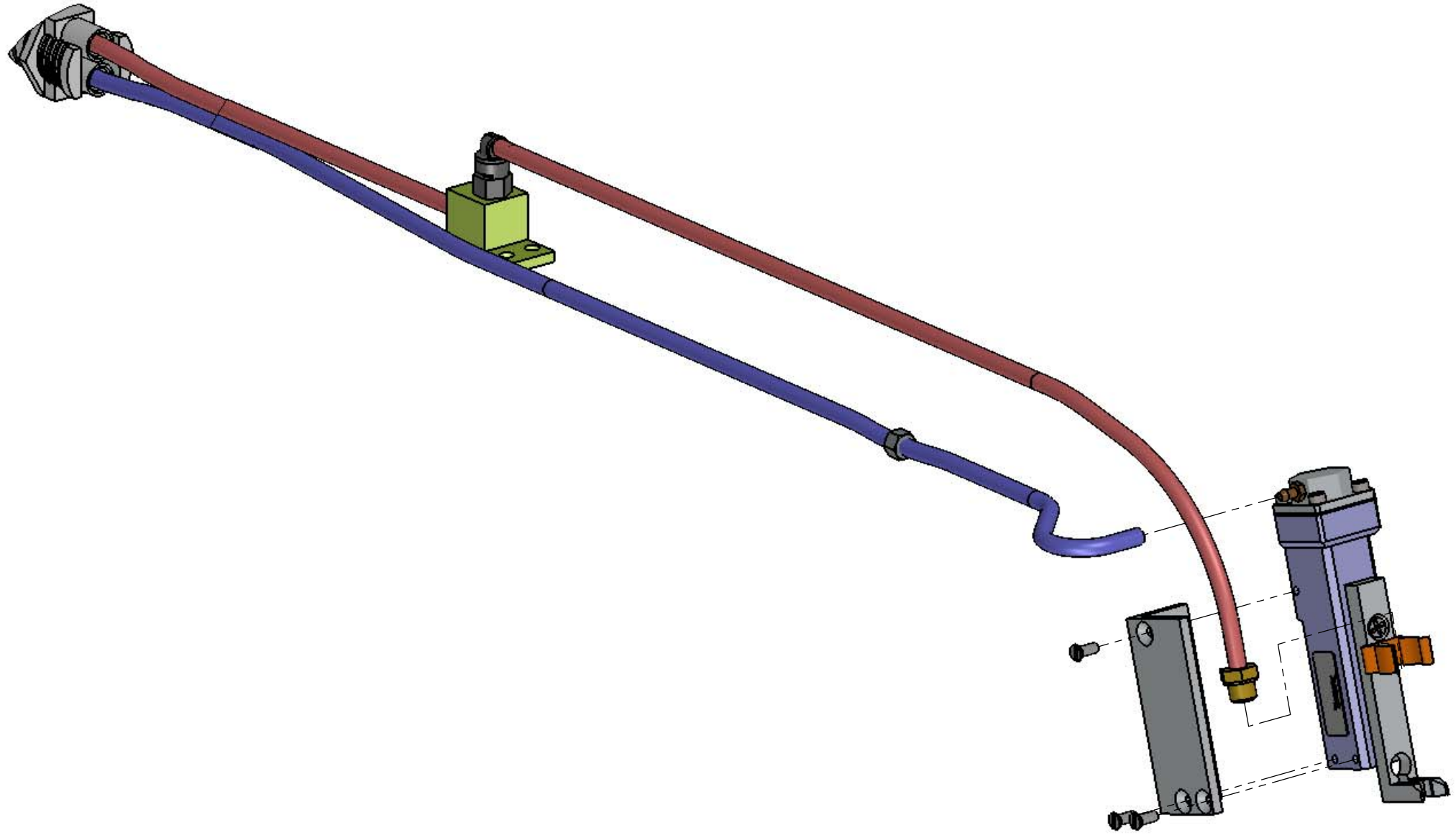
3

2

1

© Copyright Xandex Inc., All Rights Reserved. The information disclosed herein is deemed to be confidential, proprietary, and a trade secret of Xandex, Inc. This information may not be used, reproduced or disclosed without the expressed prior written consent of Xandex, Inc.

REVISIONS					
REV	DESCRIPTION	CHANGE NUMBER	BY	DATE	APPROVED
—	SEE SHEET 1	—	—	—	—



**XANDEX** INC. 1360 REDWOOD WAY, SUITE A  
 PETALUMA, CA 94954  
 (707) 763-7799

TITLE  
**KIT, PNEU SHUTTLE RETROFIT  
 - X1410**

DO NOT SCALE DRAWING

SIZE	SCALE	SHEET	DRAWING NUMBER	REV
<b>B</b>	<b>1:1</b>	<b>2 OF 2</b>	<b>355-1122</b>	<b>A</b>

8

7

6

5

4

3

2

1