

©Copyright Xandex Inc., All Rights Reserved.
The information disclosed herein is deemed to be confidential, proprietary, and a trade secret of Xandex, Inc. This information may not be used, reproduced or disclosed without the express prior written consent of Xandex, Inc.

REVISIONS					
REV	DESCRIPTION	CHANGE NUMBER	BY	DATE	APPROVED
B	REDRAWN ON CADD	1406	TR	01/21/97	D.T.
C	ADD NOTE 9	1589	JMc	12/02/97	D.T.
D	FLIP VIEW-MTG PLATE	1677	DY	06/25/98	D.T.
E	REVISE NOTE 1	D126	MD	03/09/99	

NOTES:

- FOR USE WITH PACIFIC WESTERN SYSTEMS PROBERS.
- MOUNTING PLATE IS CONNECTED TO INTERFACE USING TWO 6-32 X 1/4 PAN HD SLOT SCREWS.
- THIS INKER USES THE DM-1 AND DM-1.25 CARTRIDGES ONLY.
- INKER ARM IS ADJUSTABLE ALONG THE "Z" AXIS BY $\pm .187$.
- THE JOY STICK PROVIDES X AND Y AXIS MOVEMENT AT THE TIP OF THE CARTRIDGE NEEDLE.
- ALL DIMENSIONS SHOWN WITH ADJUSTMENTS IN NEUTRAL POSITION.
- HOLDER ALLOWS ADDITIONAL ADJUSTMENT OF "Z" AXIS BY MOVING SLIDE BRACKET.
- COMPONENTS MAY BE ORDERED SEPARATELY: INKER BASE 302 (#320-0302) AND CARTRIDGE HOLDER H1-24A7 (#310-1212). FOR 5 MIL CARTRIDGES USE HOLDER H2-24A7 (#310-2212).
- FOR 5 MIL CARTRIDGES, RETROFIT CARTRIDGE HOLDER USING PLUNGER STOP ASSEMBLY #210-0016.

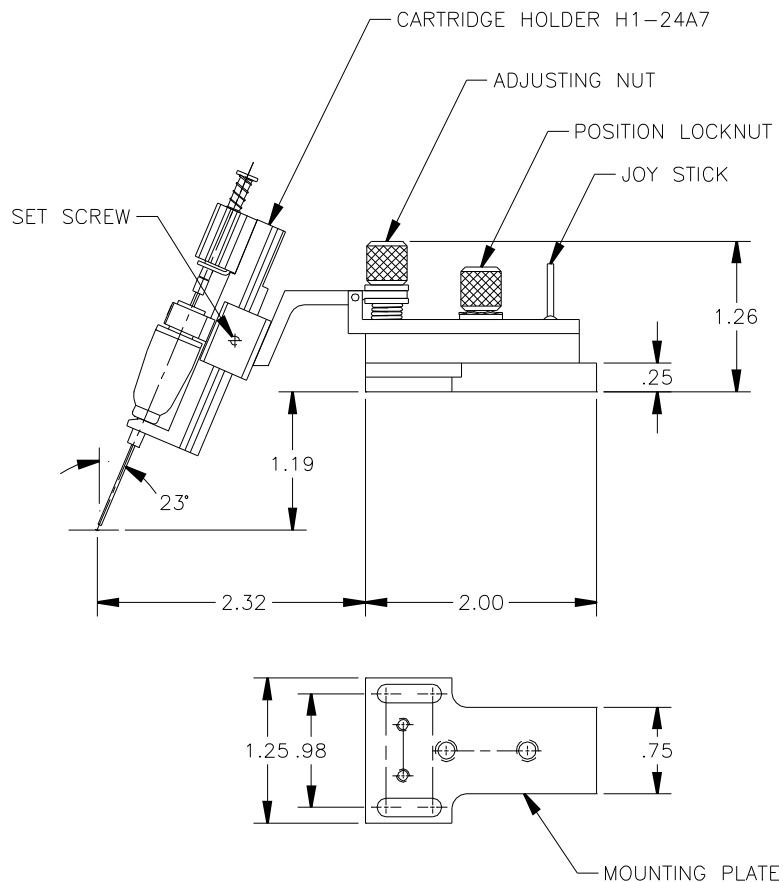
FILE NAME 9000098E	ITEM	QTY	PART NUMBER	DESCRIPTION
APPROVALS	DATE	INTERPRET DRAWING PER ANSI Y14.5 - 1982		
DRAWN T. RUFF	01/23/97	TOLERANCES UNLESS OTHERWISE SPECIFIED		
CHECKED		DIMENSIONS ARE IN INCHES		
ENGRG DAVE T.	2/5/97	DECIMALS		
INFO ENGRG		FRACTIONS \pm		
NEXT ASSEMBLIES.....USED ON		ANGLES $\pm 1^\circ$		
		63/100 ALL SURFACES		
DO NOT SCALE DRAWING				
SIZE	SCALE	SHEET	DRAWING NUMBER	REV
A	1/1	1 of 2	900-0098	E

XANDEX INC.
1125 N. McDOWELL BLVD.
PETALUMA, CA 94954
(707) 763 7799

TITLE: INKER MODEL PWS302
(KIT #330-2302)

©Copyright Xandex Inc., All Rights Reserved.
The information disclosed herein is deemed to be confidential, proprietary, and a trade secret of Xandex, Inc. This information may not be used, reproduced or disclosed without the express prior written consent of Xandex, Inc.

REVISIONS					
REV	DESCRIPTION	CHANGE NUMBER	BY	DATE	APPROVED
-	SEE SHEET 1				



XANDEX INC.
1125 N. McDOWELL BLVD.
PETALUMA, CA 94954
(707) 763 7799

TITLE: INKER MODEL PWS302 (KIT #330-2302)					
FILE NAME	DO NOT SCALE DRAWING				
9000098E	SIZE	SCALE	SHEET	DRAWING NUMBER	REV
	A	1/1	2 of 2	900-0098	E