


© Copyright 1993, Xandex Inc., All Rights Reserved.
 The information disclosed herein is deemed to be confidential, proprietary, and a trade secret of Xandex, Inc. This information may not be used, reproduced or disclosed without the expressed prior written consent of Xandex, Inc.

REVISIONS

REV	DESCRIPTION	CHANGE NUMBER	BY	DATE	APPROVED
A	INITIAL RELEASE	-	DT	09/26/91	
B	REVISED & REDRAWN	600	DT	06/11/93	
C	ADDED KLA VERSION	623	PG	10/08/93	
D	REV TO MAG BASE	1801	RAP	04/30/99	

NOTES:

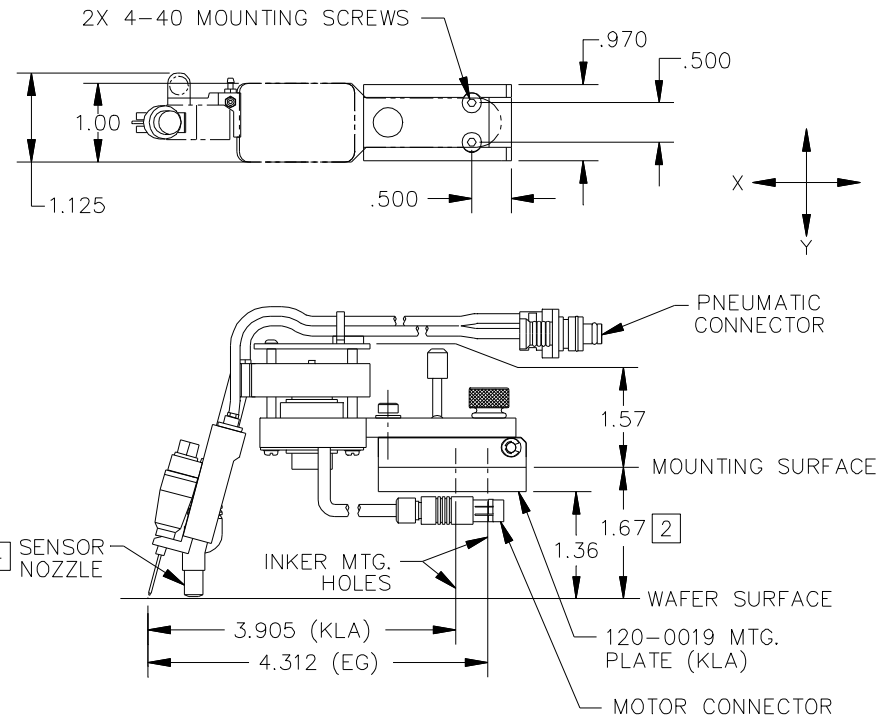
- SHUTTLE TRAVELS .050 FROM POSITION SHOWN TO DEPOSIT INK ON WAFER.
- INKER HAS VERTICAL (Z) ADJUSTMENT CAPABILITY OF $\pm .18$ IN INCREMENTS OF .001, FROM NOMINAL POSITION SHOWN.
- INKER USES "JOYSTICK" FOR X AND Y POSITIONING.
- SENSOR NOZZLE SENSES DISTANCE TO WAFER WITHIN .001 INCHES.
- INKER USES DM-2 TYPE INK CARTRIDGES.
- INKER MOUNTS TO EG PROBER USING (2) 4-40 X 3/8 LONG FLAT HEAD SOCKET SCREWS (SUPPLIED).
- FOR KLA PROBERS: INSTALL INKER MOUNTING PLATE TO PROBER USING (2) M3.5 X 6MM LONG PAN HEAD SCREWS (SUPPLIED). INKER ASSEMBLIES TO MOUNTING PLATE USING (2) 4-40 X 1/4 LONG FLAT HEAD SCREWS (SUPPLIED).


APPROVALS	DATE	ITEM	QTY	PART NUMBER	DESCRIPTION
DRAWN D. TEGLIA	09/26/91			INTERPRET DRAWING PER ASME Y14.5M-1994	 1125 N. McDOWELL BLVD. PETALUMA, CA 94954 (707) 763 7799
CHECKED				TOLERANCES UNLESS OTHERWISE SPECIFIED	
ENGRG D. TEGLIA	06/11/93			DIMENSIONS ARE IN INCHES DECIMALS	TITLE AUTO Z INKER (PNEUMATIC)
DO NOT SCALE DRAWING					
NEXT ASSEMBLIES.....USED ON		1 PL \pm	FRACTIONS \pm		
		2 PL $\pm .010$	ANGLES $\pm 1^\circ$		
		3 PL $\pm .005$	$63 \sqrt{\text{ALL SURFACES}}$	SIZE A	SCALE 1/1.5
		4 PL \pm		SHEET 1 of 2	DRAWING NUMBER 900-0133

© Copyright 1993, Xandex Inc., All Rights Reserved.
 The information disclosed herein is deemed to be confidential, proprietary, and a trade secret of Xandex, Inc. This information may not be used, reproduced or disclosed without the expressed prior written consent of Xandex, Inc.

REVISIONS

REV	DESCRIPTION	CHANGE NUMBER	BY	DATE	APPROVED
D	SEE SHEET 1	-	-	-	-



 1125 N. McDOWELL BLVD. PETALUMA, CA 94954 (707) 763 7799			TITLE AUTO Z INKER (PNEUMATIC)		
			SEE SHEET 1 FOR NOTES AND TOLERANCE INFORMATION		
SIZE A	SCALE 1/1.5	SHEET 2 of 2	DRAWING NUMBER 900-0133	REV D	