

©Copyright Xandex Inc., All Rights Reserved.
 The information disclosed herein is deemed to be confidential, proprietary, and a trade secret of Xandex, Inc. This information may not be used, reproduced or disclosed without the express prior written consent of Xandex, Inc.

REVISIONS

REV	DESCRIPTION	ECO	BY	DATE	APPROVED
A	INITIAL RELEASE	1120	DT	05/03/96	

NOTES:

1. INKER USES STANDARD DM-1 CARTRIDGES.
2. INKER IS DESIGNED FOR USE ON TERADYNE A570, A575, A580 & A585 TESTERS ON AN EG 2000 SERIES PROBER. TEST HEAD MUST BE RETRO-FITTED WITH THE XANDEX ADAPTER ASSEMBLY, PART NUMBER 220-0039. NO OTHER MODIFICATION TO THE TESTER IS NECESSARY.
3. AS BUILT, THE INKER IS DESIGNED TO WORK WITH A STANDARD TERADYNE INTERFACE. AN ADDITIONAL ADJUSTMENT OF .10 HIGHER, OR .50 LOWER TO ACCOMMODATE CUSTOM INTERFACES IS EASILY ACCOMPLISHED BY THE REMOVAL OF TWO SCREWS ON THE CARTRIDGE HOLDER ARM.
4. THE ADAPTER ASSEMBLY IS DESIGNED TO ALLOW EASY INSTALLATION OR REMOVAL OF THE INKER, BY UTILIZING TWO STAINLESS STEEL SHAFTS TO GUIDE THE INKER IN AND OUT OF THE TESTHEAD. THE ADAPTER IS ALSO DESIGNED TO ALLOW "LEVELING" OF THE INKER TO ACCOMODATE ANY LACK OF PLANARITY IN THE TESTHEAD STRUCTURE.
5. BECAUSE OF THE EXTREME DEPTH OF THE TESTHEAD, AND CONSEQUENT EXTRA LONG INKER, A HANDLE HAS BEEN PROVIDED ON THE INKER FOR EASIER INSTALLATION AND REMOVAL.
6. A NEW DESIGN UTILIZING SOLID SHAFTING, PROVIDES INCREASED RELIABILITY, IMPROVED X/Y/Z ACTUATION, AND EASY ACCESS ADJUSTMENT KNOBS.
7. X, Y ADJUSTMENT IS ± 0.062 . Z ADJUSTMENT CAPABILITY IS ± 0.125 .
8. INKER IS DESIGNED FOR USE WITH THE OPTEM HF-65 MICROSCOPE WITH A .525X-3.37X OBJECTIVE LENS. MINIMUM WORKING DISTANCE IS 114mm (4.50").
9. ORDER INKER KIT EG3307 (PART NUMBER 331-3307).

FILE NAME 9000174a	ITEM	QTY	PART NUMBER	DESCRIPTION
APPROVALS	DATE	INTERPRET DRAWING PER ANSI Y14.5 - 1982		
DRAWN D. TEGLIA	5/3/96	TOLERANCES UNLESS OTHERWISE SPECIFIED		
CHECKED		DIMENSIONS ARE IN INCHES DECIMALS		
ENGR		1 PL \pm FRACTIONS \pm		
ENGR		2 PL \pm ANGLES \pm		
ENGR		3 PL \pm		
ENGR		4 PL \pm <input checked="" type="checkbox"/> ALL SURFACES		
NEXT ASSEMBLIES.....USED ON 331-3307		DO NOT SCALE DRAWING		
SIZE	SCALE	SHEET	DRAWING NUMBER	REV
A	1/2	1 OF 4	900-0174	A

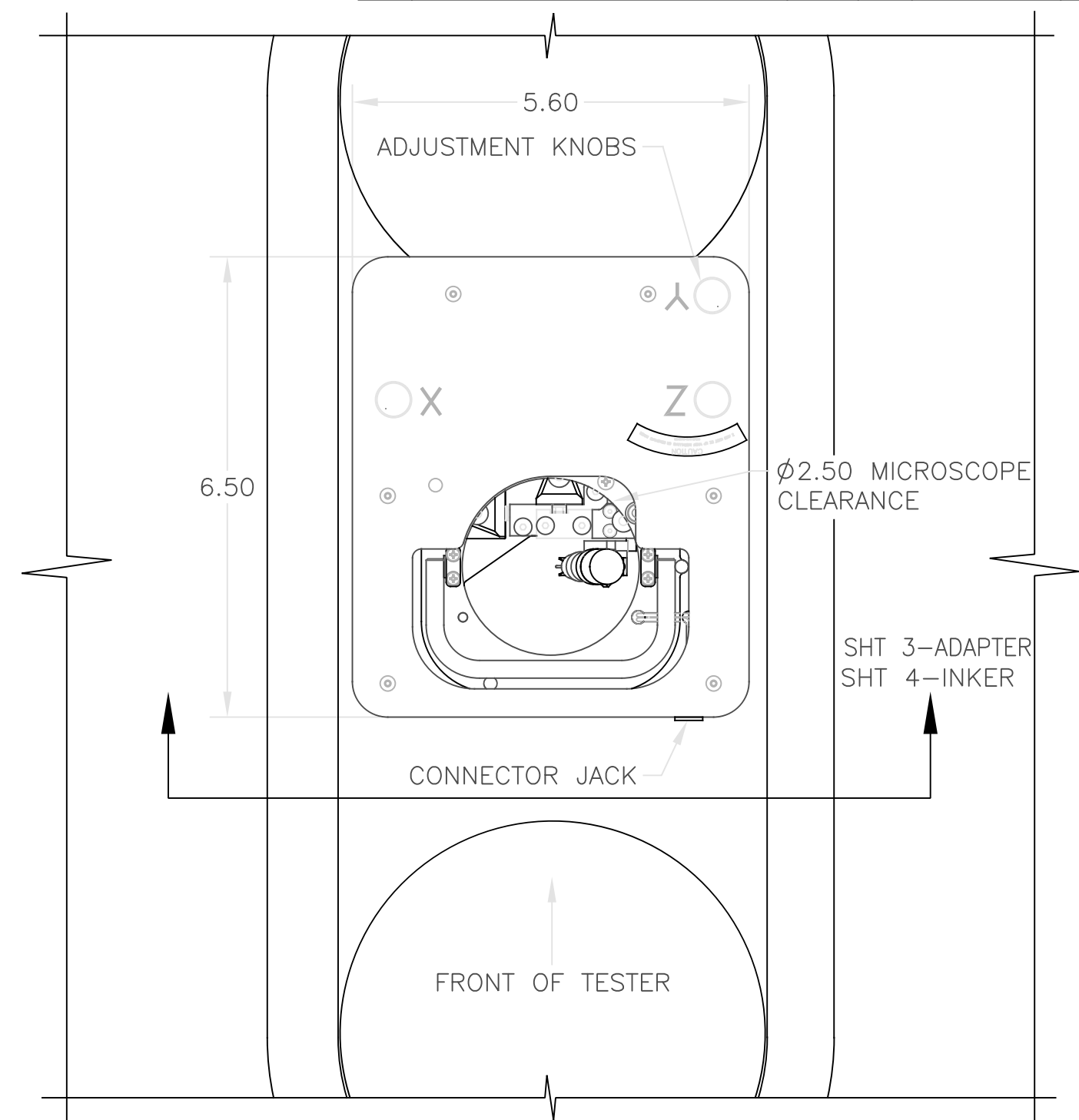


TITLE
 INKER SERIES EG3307
 TERADYNE A575 R/A

©Copyright Xandex Inc., All Rights Reserved.
 The information disclosed herein is deemed to be confidential, proprietary, and a trade secret of Xandex, Inc. This information may not be used, reproduced or disclosed without the express prior written consent of Xandex, Inc.

REVISIONS

REV	DESCRIPTION	ECO	BY	DATE	APPROVED
-	SEE SHEET 1				

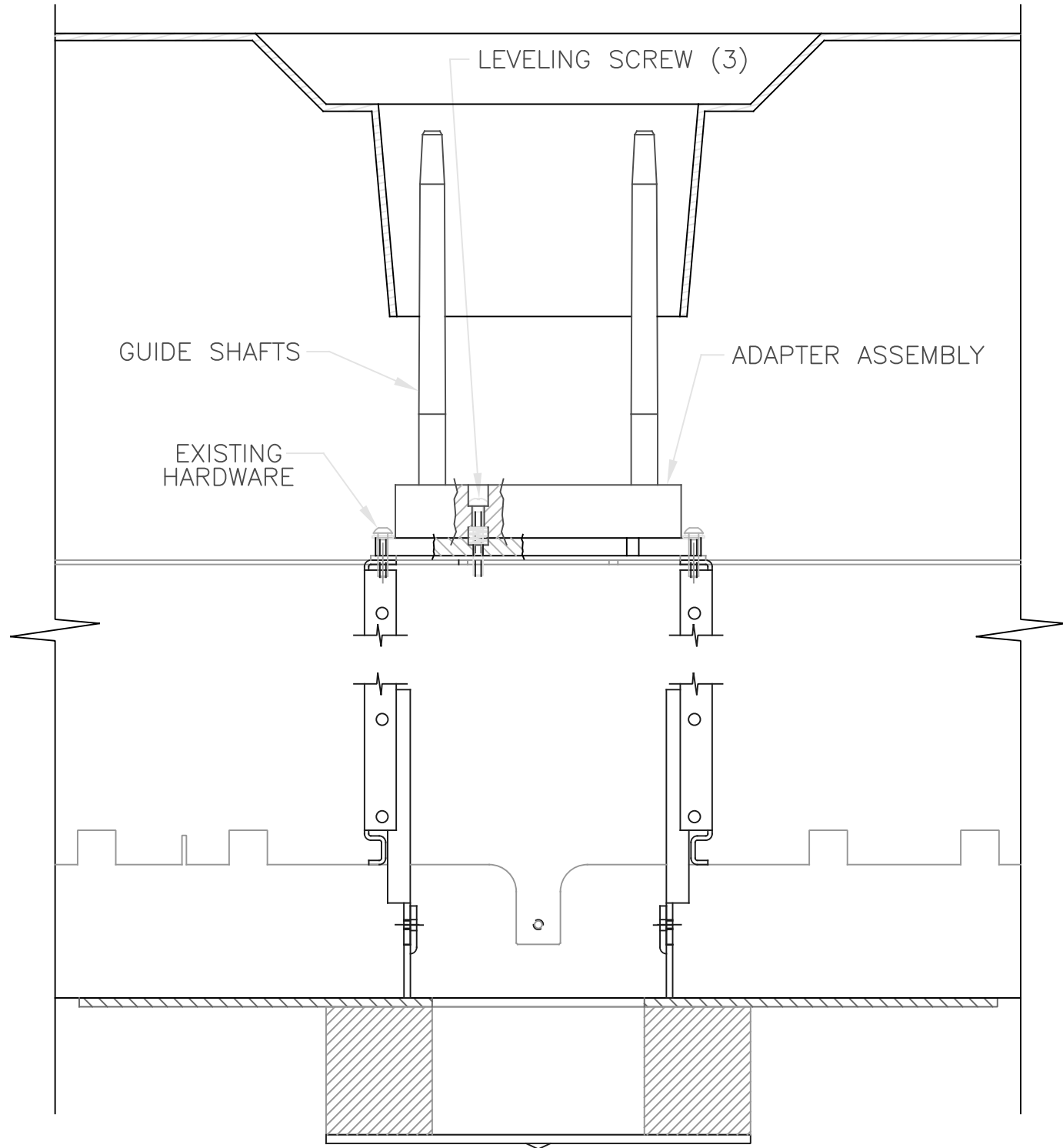


VIEW LOOKING AT TOP OF TESTER WITH INKER INSTALLED

XANDEX INC. logo		TITLE INKER SERIES EG3307 TERADYNE A575 R/A	
1333 N. McDOWELL PETALUMA CA 94954 (707) 763 7799		FILE NAME 9000174A	DO NOT SCALE DRAWING
SIZE	SCALE	SHEET	DRAWING NUMBER
A	1/2	2 OF 4	900-0174
			REV A

©Copyright Xandex Inc., All Rights Reserved.
 The information disclosed herein is deemed to be confidential, proprietary, and a trade secret of Xandex, Inc. This information may not be used, reproduced or disclosed without the express prior written consent of Xandex, Inc.

REVISIONS					
REV	DESCRIPTION	ECO	BY	DATE	APPROVED
-	SEE SHEET 1				

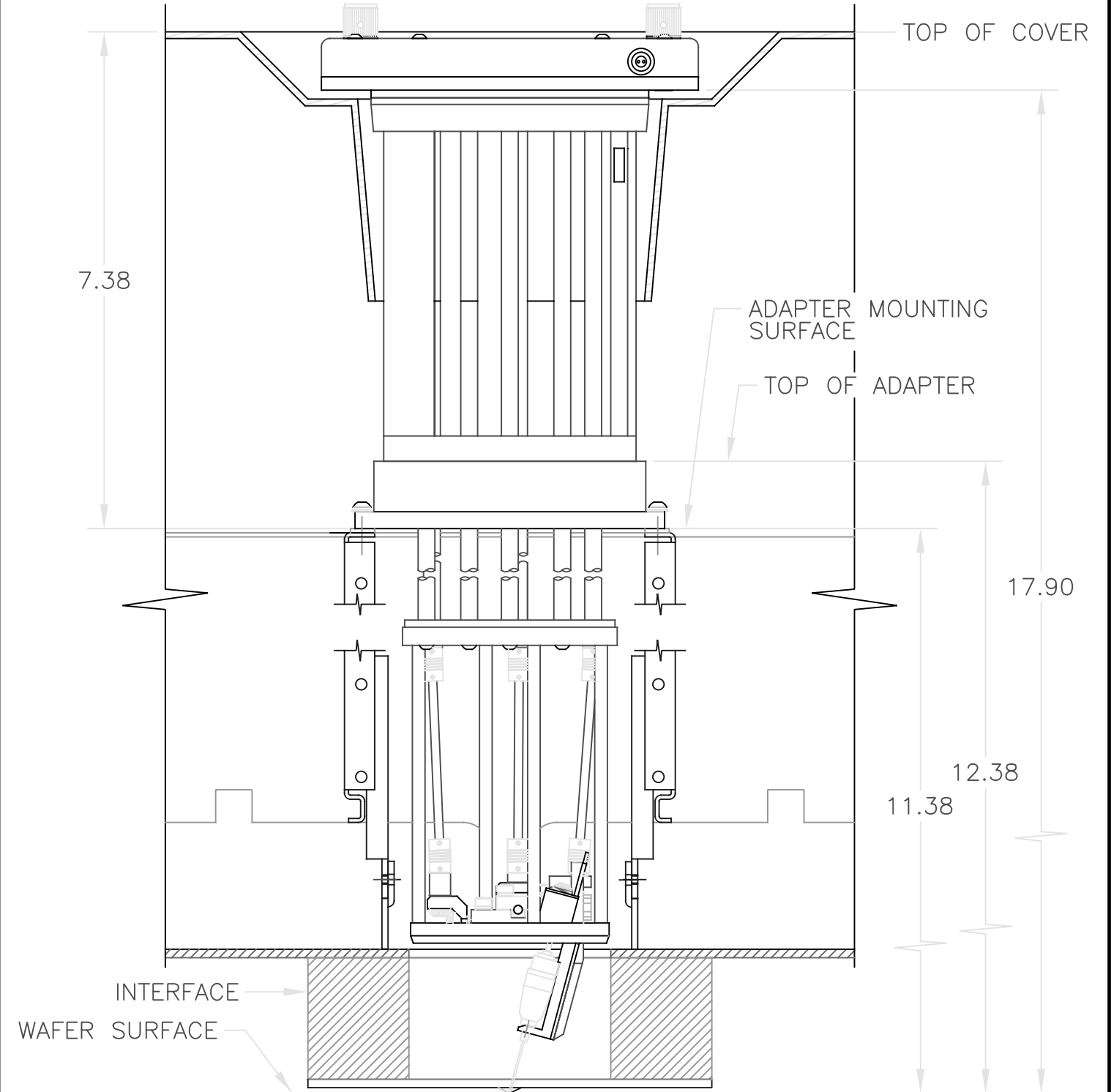


1333 N. McDOWELL
 PETALUMA CA 94954
 (707) 763 7799

TITLE INKER SERIES EG3307 TERADYNE A575 R/A				
FILE NAME 9000174A		DO NOT SCALE DRAWING		
SIZE A	SCALE 1/2	SHEET 3 OF 4	DRAWING NUMBER 900-0174	REV A

©Copyright Xandex Inc., All Rights Reserved.
 The information disclosed herein is deemed to be confidential, proprietary, and a trade secret of Xandex, Inc. This information may not be used, reproduced or disclosed without the express prior written consent of Xandex, Inc.

REVISIONS					
REV	DESCRIPTION	ECO	BY	DATE	APPROVED
-	SEE SHEET 1				



1333 N. McDOWELL
 PETALUMA CA 94954
 (707) 763 7799

TITLE INKER SERIES EG3307 TERADYNE A575 R/A				
FILE NAME 9000174A		DO NOT SCALE DRAWING		
SIZE A	SCALE 1/2	SHEET 4 OF 4	DRAWING NUMBER 900-0174	REV A