


| REVISIONS | | | | | |
|-----------|-----------------|------|----|----------|----------|
| REV | DESCRIPTION | ECO | BY | DATE | APPROVED |
| A | INITIAL RELEASE | 0275 | DT | 06/18/97 | |

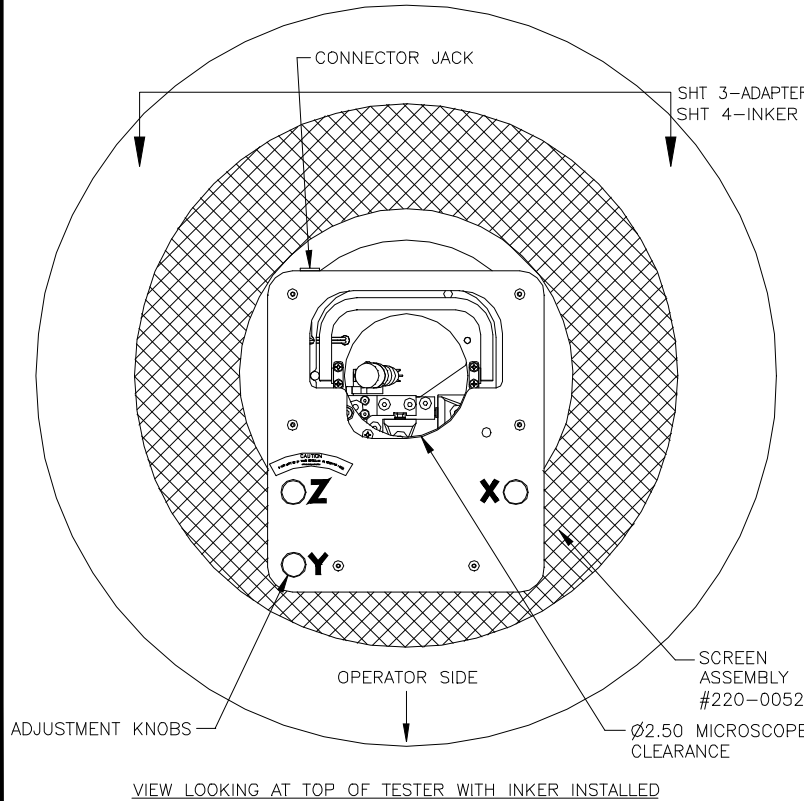
NOTES:


1. INKER USES STANDARD DM-1 CARTRIDGES.
2. INKER IS DESIGNED FOR USE ON CREDENCE VISTAVISION OR VISTALOGIC 512 PIN TESTERS ON AN EG 2000 SERIES PROBER. TEST HEAD MUST BE RETRO-FITTED WITH THE XANDEX ADAPTER ASSEMBLY, PART NUMBER 220-0053. IF YOUR TESTER IS EQUIPPED WITH A SCREENED TOP COVER, YOU WILL REQUIRE XANDEX SCREEN ASSEMBLY, PART NUMBER 220-0052. BOTH ASSEMBLIES ARE INCLUDED WITH KIT 331-3317.
3. AS BUILT, THE INKER IS DESIGNED TO WORK WITH A STANDARD TEST DESIGN INTERFACE. AN ADDITIONAL ADJUSTMENT OF .10 HIGHER, OR .50 LOWER TO ACCOMMODATE CUSTOM INTERFACES IS EASILY ACCOMPLISHED BY THE REMOVAL OF TWO SCREWS ON THE CARTRIDGE HOLDER ARM.
4. INKER IS DESIGNED FOR USE WITH THE OPTEM HF-65 "STRETCH" MICROSCOPE, WITH A 6" FOCAL LENGTH (WORKING DISTANCE).
5. THE ADAPTER ASSEMBLY IS DESIGNED TO ALLOW EASY INSTALLATION OR REMOVAL OF THE INKER, BY UTILIZING TWO STAINLESS STEEL SHAFTS TO GUIDE THE INKER IN AND OUT OF THE TESTHEAD. THE ADAPTER IS ALSO DESIGNED TO ALLOW "LEVELING" OF THE INKER TO ACCOMODATE ANY LACK OF PLANARITY IN THE TESTHEAD STRUCTURE.
6. BECAUSE OF THE EXTREME DEPTH OF THE TESTHEAD, AND CONSEQUENT EXTRA LONG INKER, A HANDLE HAS BEEN PROVIDED ON THE INKER FOR EASIER INSTALLATION AND REMOVAL.
7. A NEW DESIGN UTILIZING SOLID SHAFTING, PROVIDES INCREASED RELIABILITY, IMPROVED X/Y/Z ACTUATION, AND EASY ACCESS ADJUSTMENT KNOBS.
8. X, Y ADJUSTMENT IS $\pm .062$. Z ADJUSTMENT CAPABILITY IS $\pm .125$.
9. ORDER INKER KIT EG3317 (PART NUMBER 331-3317).

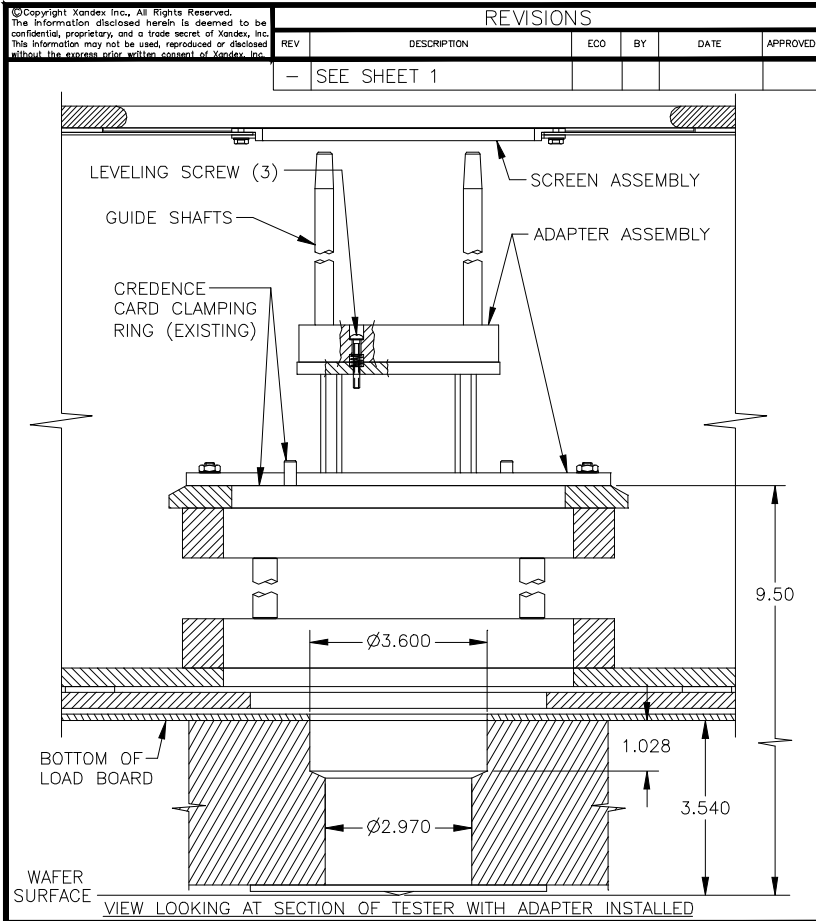
| | | | | | |
|-----------|-----------|---|-----|-------------|-------------|
| FILE NAME | 9000191A | ITEM | QTY | PART NUMBER | DESCRIPTION |
| APPROVALS | DATE | INTERPRET DRAWING PER ANSI Y14.5 - 1982 | | | |
| DRAWN | D. TEGLIA | TOLERANCES UNLESS OTHERWISE SPECIFIED | | | |
| CHECKED | 6/16/97 | DIMENSIONS ARE IN INCHES | | | |
| ENG | | DECIMALS | | | |
| DATE | | 1 PL \pm FRACTIONS \pm | | | |
| BY | | 2 PL \pm ANGLES \pm | | | |
| DATE | | 3 PL \pm | | | |
| BY | | 4 PL \pm <input checked="" type="checkbox"/> ALL SURFACES | | | |
| DATE | | NEXT ASSEMBLIES.....USED ON | | | |

| | | | |
|---|-------|--|----------------|
|  | | 1125 N. McDOWELL BLVD. PETALUMA, CA 95954 (707) 763 7799 | |
| TITLE INKER MODEL EG3317, REMOTE ADJ, CREDENCE 512 | | | |
| DO NOT SCALE DRAWING | | | |
| SIZE | SCALE | SHEET | DRAWING NUMBER |
| A | 1/2 | 1 of 1 | 900-0191 |
| REV | | | A |

| REVISIONS | | | | | |
|-----------|-------------|-----|----|------|----------|
| REV | DESCRIPTION | ECO | BY | DATE | APPROVED |
| - | SEE SHEET 1 | | | | |



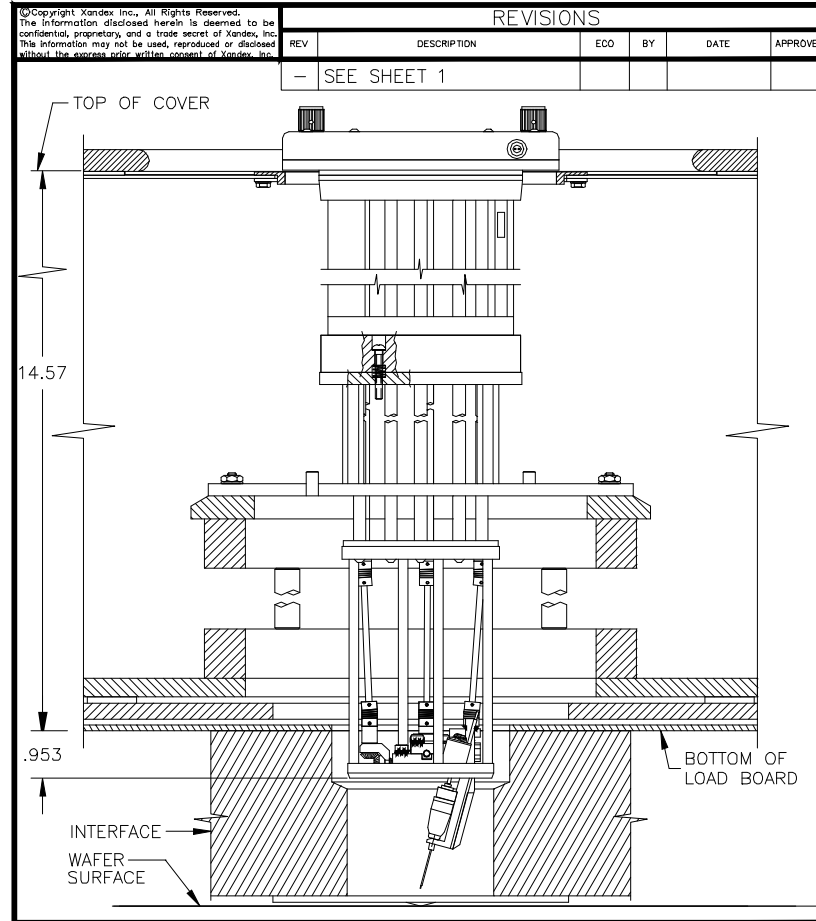
| | | | |
|---|----------|--|----------------|
|  | | 1125 N. McDOWELL BLVD. PETALUMA, CA 95954 (707) 763 7799 | |
| TITLE INKER MODEL EG3317, REMOTE ADJ, CREDENCE 512 | | | |
| DO NOT SCALE DRAWING | | | |
| FILE NAME | 9000191A | DO NOT SCALE DRAWING | |
| SIZE | SCALE | SHEET | DRAWING NUMBER |
| A | 1/2 | 2 of 4 | 900-0191 |
| REV | | | A |



XANDEX
INC.

1125 N. McDOWELL BLVD.
PETALUMA, CA 95954
(707) 763 7799

| | | | | | |
|--|-----------|--------------|-------------------------|-------|--|
| TITLE INKER MODEL EG3317 REMOTE ADJ, CREDENCE 512 | | | | | |
| FILE NAME 9000191A | | | DO NOT SCALE DRAWING | | |
| SIZE A | SCALE 1/2 | SHEET 3 of 4 | DRAWING NUMBER 900-0191 | REV A | |



XANDEX
INC.

1125 N. McDOWELL BLVD.
PETALUMA, CA 95954
(707) 763 7799

| | | | | | |
|--|-----------|--------------|-------------------------|-------|--|
| TITLE INKER MODEL EG3317 REMOTE ADJ, CREDENCE 512 | | | | | |
| FILE NAME 9000191A | | | DO NOT SCALE DRAWING | | |
| SIZE A | SCALE 1/2 | SHEET 4 of 4 | DRAWING NUMBER 900-0191 | REV A | |