

©Copyright Xandex Inc., All Rights Reserved.
 The information disclosed herein is deemed to be confidential, proprietary, and a trade secret of Xandex, Inc. This information may not be used, reproduced or disclosed without the express prior written consent of Xandex, Inc.

REVISIONS					
REV	DESCRIPTION	CHANGE NUMBER	BY	DATE	APPROVED
A	INITIAL RELEASE	0349	JMG	2/27/98	

NOTES:

1. INKER IS DESIGNED FOR USE ON HP94000 TEST HEADS. INKER USES DM-1 STYLE CARTRIDGES.
2. INKER IS DESIGNED FOR USE WITH THE OPTEM HF VIDEO MICROSCOPE, WHICH MUST BE OUTFITTED WITH A .75X OBJECTIVE LENS TO ACCOMMODATE THE 3.3 INCH FOCAL LENGTH (WORKING DISTANCE) REQUIRED FOR MINIMUM INKER CLEARANCES.
3. OPTEM VIDEO MICROSCOPE TESTHEAD ADAPTER PLATE, PART NUMBER A258076-401 IS REQUIRED TO INSTALL THE INKER. THE VIDEO MICROSCOPE ADAPTER RING ASSEMBLY, PART NUMBER B289075-101 IS NOT REQUIRED AND CANNOT BE USED TO INSTALL THE INKER. XANDEX ADAPTER ASSEMBLY MOUNTS DIRECTLY TO THE OPTEM MOUNTING BRACKET (PROVIDED BY OPTEM) AND HOUSES BOTH THE VIDEO MICROSCOPE AND INKER.
4. ADJUSTMENT CAPABILITY IS AS FOLLOWS: X= ±.20, Y= ± .25, Z= ±.10. INKER POSITION SHOWN ON SHEET 2 REFLECTS THE INKER AT INSTALLATION WITH THE Z ADJUST ALL THE WAY UP. INKER TRAVELS APPROXIMATELY .10 FROM POSITION SHOWN TO INKING POSITION. INKER HAS BOTH COARSE AND FINE Z ADJUSTMENT CAPABILITY. ADDITIONAL Z ADJUSTMENT OF .1 LOWER, OR .2 HIGHER IS ACCOMPLISHED BY CHANGING THE MOUNTING OF THE HOLDER ARM.
5. ALLOWABLE VIDEO MICROSCOPE X/Y TRAVEL IS ±.25 WITH THE INKER INSTALLED. THE VIDEO MICROSCOPE MUST BE REMOVED TO CHANGE INK CARTRIDGES. THIS IS EASILY ACCOMPLISHED BY LOOSENING THE 3 MICROSCOPE LOCKDOWN SCREWS ON THE ADAPTER RING AND LIFTING OUT THE VIDEO MICROSCOPE. INKER REMOVES BY UNSCREWING THE 2 INKER LOCKDOWN SCREWS AND LIFTING OUT THE INKER. THE ADAPTER PLATES AND RING REMAIN FIXED TO THE TESTHEAD.
6. ORDER INKER KIT EG3329 (PART NUMBER 331-3329).

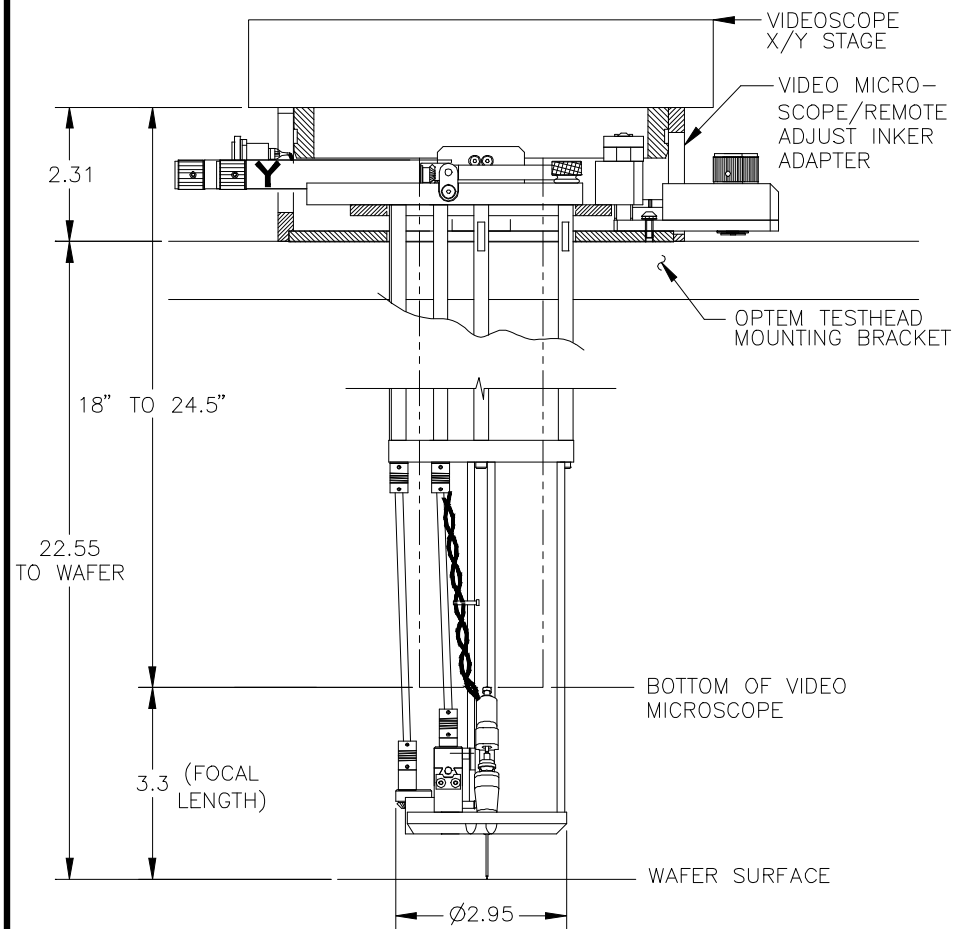
FILE NAME	9000201A	ITEM	QTY	PART NUMBER	DESCRIPTION
APPROVALS	DATE	INTERPRET DRAWING PER ASME Y14.5M-1994			
DRAWN	JAMES G.	2/12/98			
CHECKED		TOLERANCES UNLESS OTHERWISE SPECIFIED			
DATE		DIMENSIONS ARE IN INCHES			
ENG'G		DECIMALS			
NEXT ASSEMBLIES.....USED ON		1 PL ±	FRACTIONS ±		
331-3329		2 PL ±	ANGLES ±		
		3 PL ±	ALL SURFACES		
		4 PL ±			

XANDEX INC.
 1125 N. McDOWELL BLVD.
 PETALUMA, CA 94954
 (707) 763 7799

TITLE				
INKER EG3329, REMOTE ADJ. W/OPTEM VIDEOSCOPE				
DO NOT SCALE DRAWING				
SIZE	SCALE	SHEET	DRAWING NUMBER	REV
A	1/2	1 OF 3	900-0201	A

©Copyright Xandex Inc., All Rights Reserved.
 The information disclosed herein is deemed to be confidential, proprietary, and a trade secret of Xandex, Inc. This information may not be used, reproduced or disclosed without the express prior written consent of Xandex, Inc.

REVISIONS					
REV	DESCRIPTION	CHANGE NUMBER	BY	DATE	APPROVED
-	SEE SHT 1	-	-	-	-



XANDEX INC.

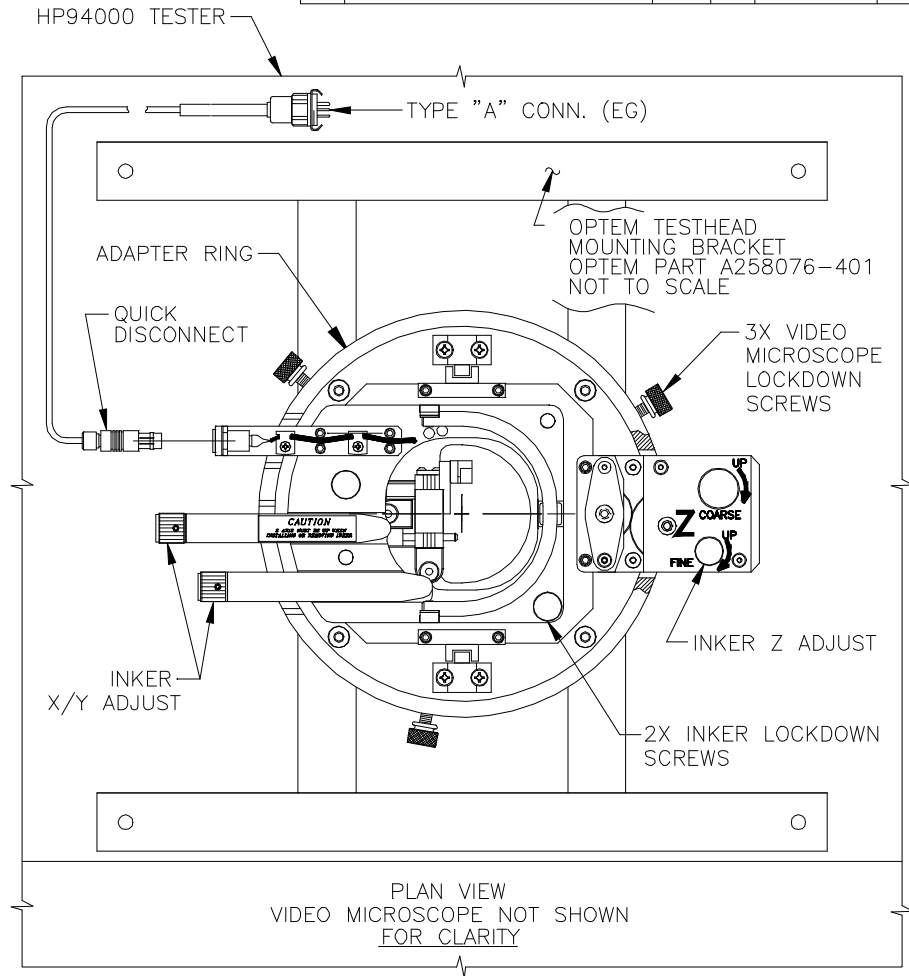
1125 N. McDOWELL BLVD.
 PETALUMA, CA 94954
 (707) 763 7799

TITLE				
INKER EG3329, REMOTE ADJ. W/OPTEM VIDEOSCOPE				
DO NOT SCALE DRAWING				
FILE NAME	9000201A	DO NOT SCALE DRAWING		
SIZE	SCALE	SHEET	DRAWING NUMBER	REV
A	1/2	2 OF 3	900-0201	A

© Copyright Xandex Inc., All Rights Reserved.
 The information disclosed herein is deemed to be confidential, proprietary, and a trade secret of Xandex, Inc. This information may not be used, reproduced or disclosed without the express prior written consent of Xandex, Inc.

REVISIONS

REV	DESCRIPTION	CHANGE NUMBER	BY	DATE	APPROVED
-	SEE SHT 1	-	-	-	-



1125 N. McDOWELL BLVD.
 PETALUMA, CA 94954
 (707) 763 7799

TITLE INKER EG3329, REMOTE
 ADJ. W/OPTEM VIDEOSCOPE

FILE NAME	9000201A		DO NOT SCALE DRAWING	
SIZE	SCALE	SHEET	DRAWING NUMBER	REV
A	1/2	3 of 3	900-0201	A