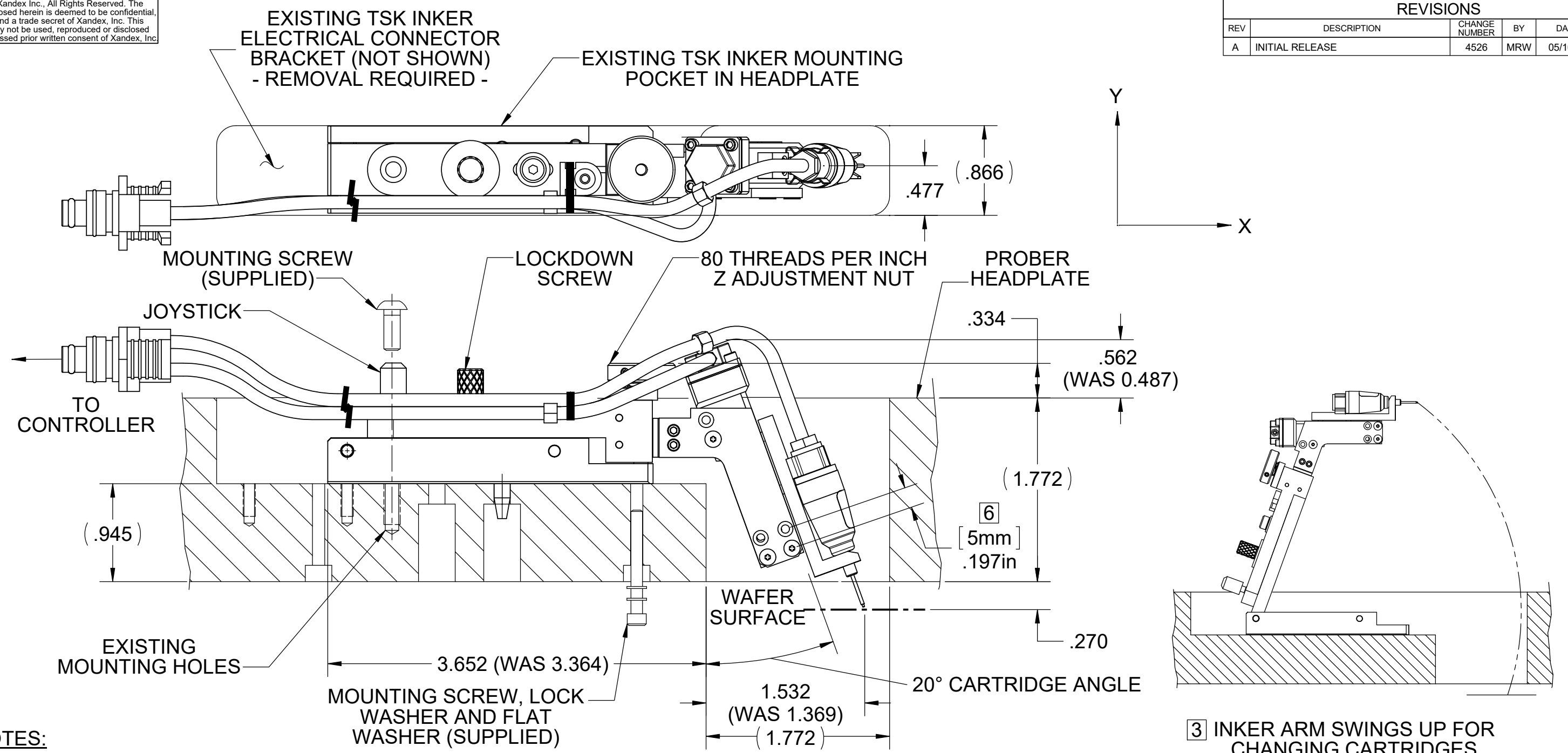


© Copyright Xandex Inc., All Rights Reserved. The information disclosed herein is deemed to be confidential, proprietary, and a trade secret of Xandex, Inc. This information may not be used, reproduced or disclosed without the expressed prior written consent of Xandex, Inc.

REVISIONS					
REV	DESCRIPTION	CHANGE NUMBER	BY	DATE	APPROVED
A	INITIAL RELEASE	4526	MRW	05/16/22	



**NOTES:**

1. INKER IS DESIGNED FOR USE ON TSK-APM-90 PROBERS, AND REPLACES EXISTING TSK INKER. TSK INKER AND CONNECTOR BRACKET MUST BE REMOVED TO INSTALL XANDEX INKER.
2. THIS INKER IS DESIGNED TO WORK WITH DM-2.3 CARTRIDGES ONLY.
3. FROM NEUTRAL POSITION, Z TRAVEL ±.110, X TRAVEL ±.125, Y TRAVEL ±.190 AT THE CARTRIDGE TIP. INKER ARM SWING FOR CARTRIDGE CHANGE MAY REQUIRE JOYSTICK POSITIONING AWAY FROM NEUTRAL.
4. ORDER INKER SET X1412, PART NUMBER 340-1412.
5. THE WEIGHT OF THE ASSEMBLY HAS INCREASED 8 GRAMS.
6. ALTERNATE MOUNTING HOLES ALLOW USER TO POSITION THE SHUTTLE FURTHER AWAY FROM THE WORK PIECE FOR APPLICATIONS WHERE IT IS REQUIRED.

APPROVALS	DATE	INTERPRET DRAWING PER ASME Y14.5M-1994
DRAWN	MRW 11/10/2021	
CHECKED	File Approved per DCA#147	TOLERANCES
ENGRG	J. THOMAS 11/10/2021	UNLESS OTHERWISE SPECIFIED DIMENSIONS ARE IN INCHES
NEXT ASSEMBLIES.....USED ON		DECIMALS
		1 PL ±
		2 PL ±
		3 PL ±
		FRACTIONS ±
		ANGLES ±
		ALL SURFACES

**XANDEX INC.** 1360 REDWOOD WAY, SUITE A PETALUMA, CA 94954 (707) 763-7799

TITLE  
**OD DWG PNEU INKR X1412**

DO NOT SCALE DRAWING

SIZE	SCALE	SHEET	DRAWING NUMBER	REV
<b>B</b>	<b>1:1</b>	<b>1 of 1</b>	<b>900-0222</b>	<b>A</b>