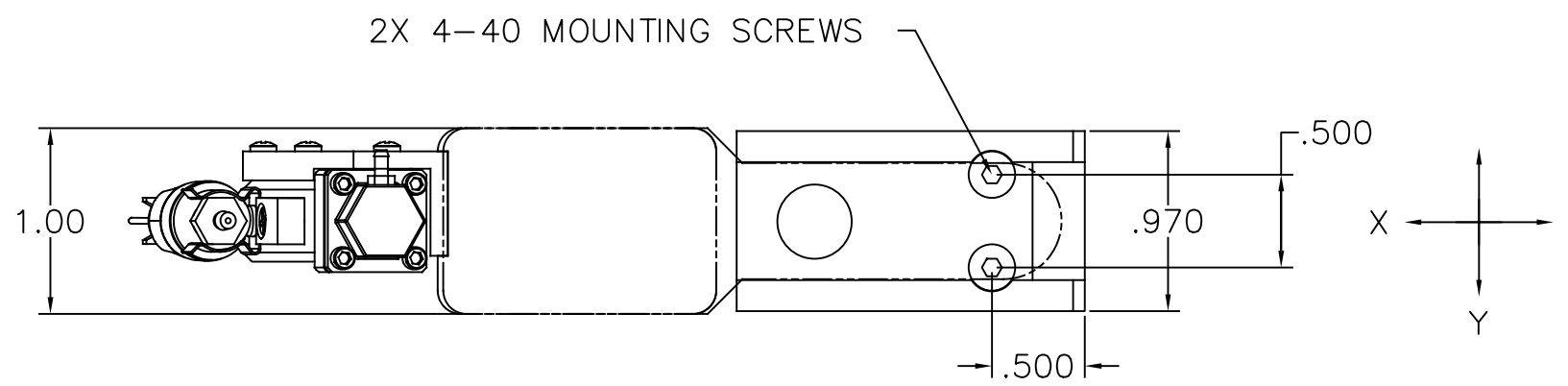


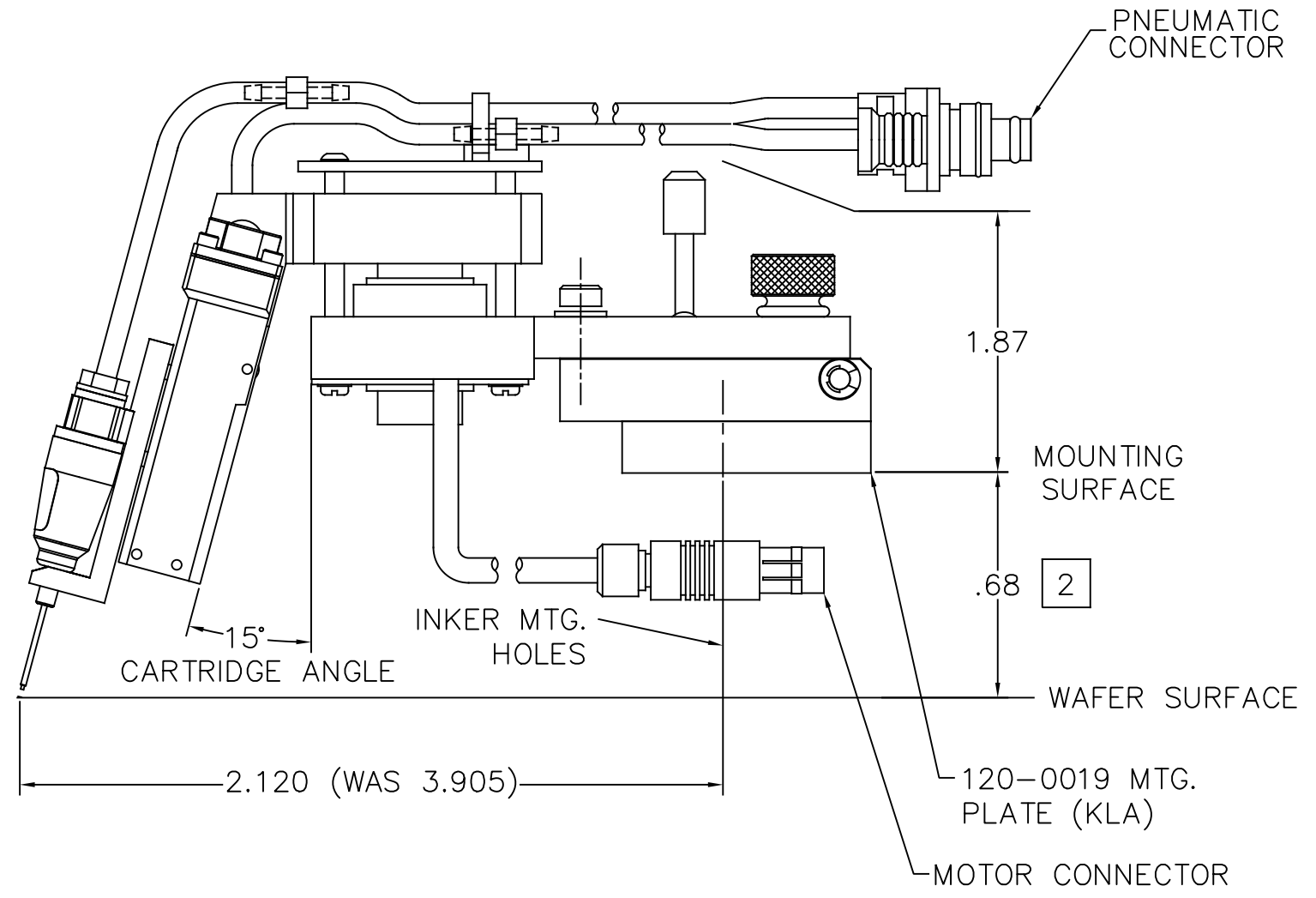
©Copyright Xandex Inc., All Rights Reserved.  
 The information disclosed herein is deemed to be confidential, proprietary, and a trade secret of Xandex, Inc. This information may not be used, reproduced or disclosed without the express prior written consent of Xandex, Inc.


REVISIONS					
REV	DESCRIPTION	CHANGE NUMBER	BY	DATE	APPROVED
A	INITIAL RELEASE (2)	4526	MRW	05/17/22	



NOTES:

1. IN FACTORY SETTING, SHUTTLE TRAVELS .050 FROM POSITION SHOWN TO DEPOSIT INK ON WAFER. SHUTTLE TRAVEL IS USER ADJUSTABLE FROM 0 TO .050 INCHES.
2. INKER HAS VERTICAL (Z) ADJUSTMENT CAPABILITY OF  $\pm .18$  IN INCREMENTS OF .0005, FROM NOMINAL POSITION SHOWN.
3. INKER USES "JOYSTICK" FOR X AND Y POSITIONING.
4. INKER USES DM-2 TYPE INK CARTRIDGES.
5. FOR KLA PROBES: INSTALL INKER MOUNTING PLATE (120-0019) TO PROBER USING (2) M3.5 X 6MM LONG PAN HEAD SCREWS (SUPPLIED). INKER ASSEMBLES TO MOUNTING PLATE USING (2) 4-40 X 1/4 LONG FLAT HEAD SCREWS (SUPPLIED).
6. FOR KLA PROBES,  
 ORDER SET X4215 PART NUMBER 340-4215 FOR STANDARD CONTROLLER SOFTWARE  
 ORDER SET X4217 PART NUMBER 340-4217 FOR "NO PUFF" CONTROLLER SOFTWARE MODIFICATION.
7. THE WEIGHT OF THE ASSEMBLY HAS INCREASED 8 GRAMS.



APPROVALS	DATE	ITEM	QTY	PART NUMBER	DESCRIPTION
DRAWN M. J. W.	11/11/21	1		INTERPRET DRAWING PER ASME Y14.5M-1994	 1360 REDWOOD WAY, SUITE A PETALUMA, CA 94954 (707) 763 7799
CHECKED <b>File Approved per DCA#147</b>				TOLERANCES UNLESS OTHERWISE SPECIFIED	
ENGRG J. THOMAS	11/11/21			DIMENSIONS ARE IN INCHES DECIMALS 1 PL $\pm$ FRACTIONS $\pm$ 2 PL $\pm .010$ ANGLES $\pm 1^\circ$ 3 PL $\pm .005$ 4 PL $\pm$ 63 $\sqrt$ ALL SURFACES	
NEXT ASSEMBLY USED ON					TITLE OD DWG MOTR Z INKR X4215/X4217 DO NOT SCALE DRAWING
SIZE D	SCALE 2/1	SHEET 1 of 2	DRAWING NUMBER 900-0226		REV A